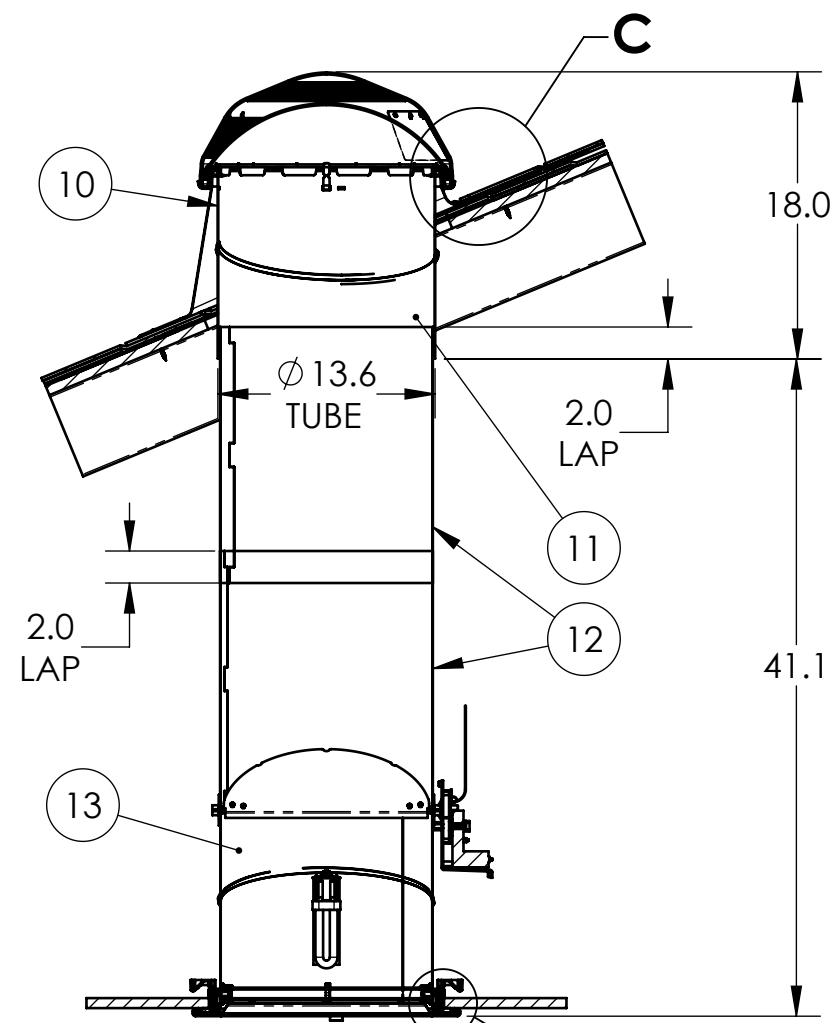
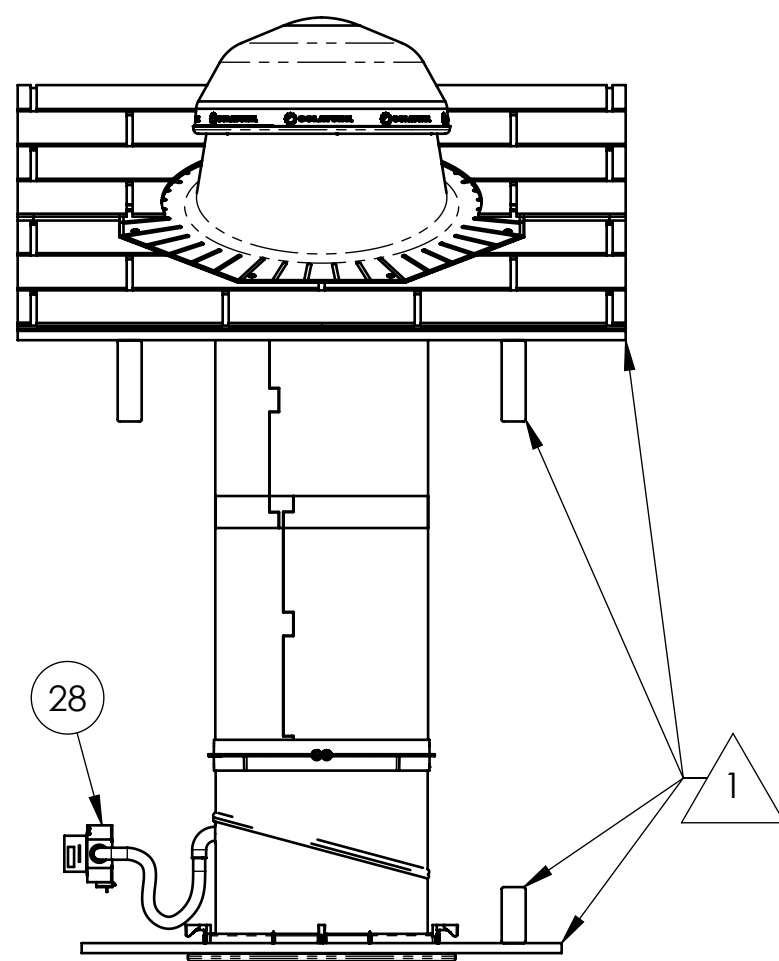
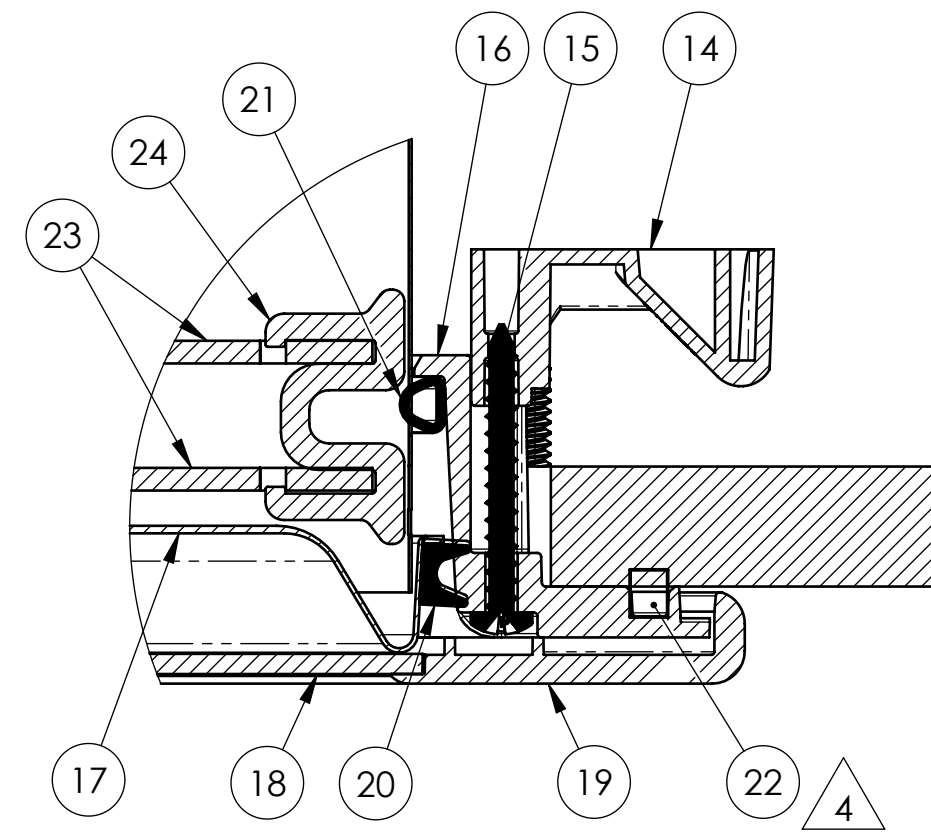


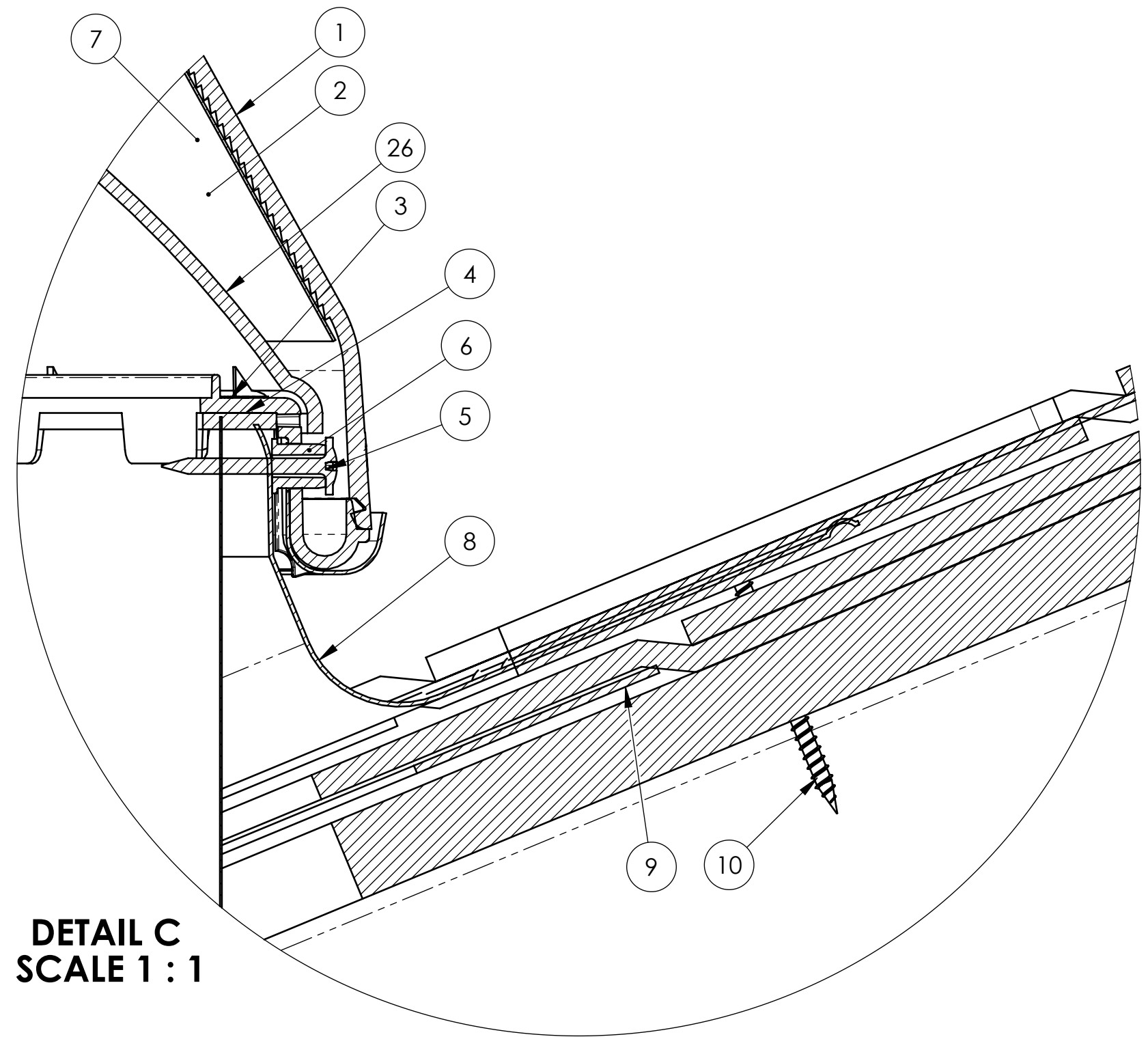
FLASHING SHOWN WITH OPTIONAL 2"-48" TURRET EXTENSION



SECTION A-A



DETAIL B SCALE 1:1



DETAIL C SCALE 1:1

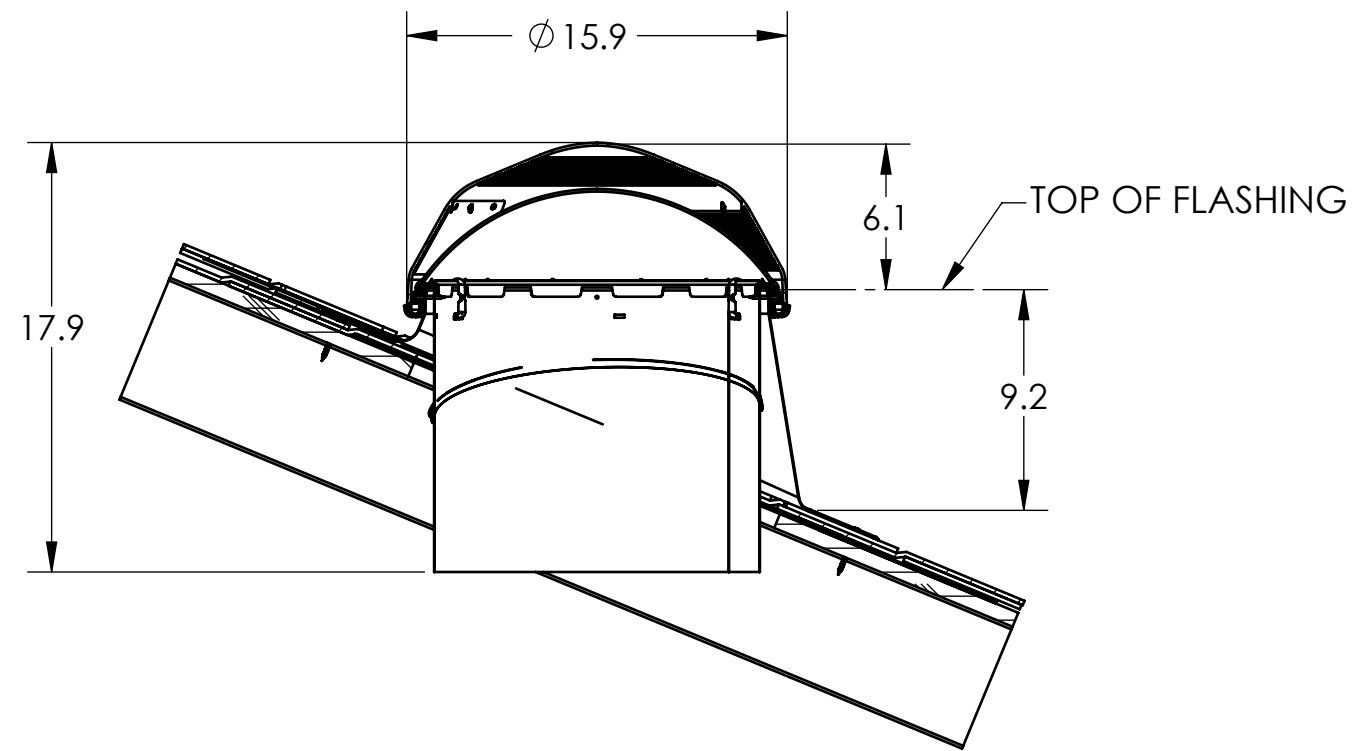
- NOTES:
1. STRUCTURAL ELEMENTS (PLYWOOD, RAFTERS, DRYWALL ETC.) BY OTHERS & SHOWN FOR REFERENCE ONLY
 2. ALL TUBE JOINTS & SEAMS TAPED WITH 2" FOIL TAPE (NOT SHOWN)
 3. SEE PAGE 3 FOR ALTERNATE DIFFUSER CONFIGURATIONS
 4. ITEM #22: RECTANGULAR FOAM OR SEALANT BEAD

ITEM NO.	QTY.	PART NO.	DESCRIPTION	MATERIAL
1	1	410820	DOME 290 DS	PMMA
2	1	410830	LIGHTTRACKER RELECTOR 290 DS	ALUMINUM LAMINATE
3	1	410660	DOME RING 290 DS	PMMA
4	1	600610	FOAM SEAL RECTANGULAR 1/8" X 9/16"	FOAM (VARIOUS)
5	4	700240	SCREW #8 X 1" SMS	STEEL
6	4	410730	DOME RING SPACER	POLYAMIDE
7	3	410750	TOP TUBE CLIP	PMMA
8	1	VARIES*	FLASHING	STEEL
9	1	700280/700300	SEALANT	URETHANE
10	8	700480	SCREW #10 X 2" SMS	STEEL
11	1	302240	TOP TUBE 290 DS	ALUMINUM LAMINATE
12	1	301800/301830	EXT. TUBE 16"/24" 290 DS	ALUMINUM LAMINATE
13	1	302120	BOTTOM TUBE 290 DS	ALUMINUM LAMINATE
14	4	410220	CLAMP	POLYAMIDE
15	4	700450	SCREW #8 x 1.5" SMS	STEEL
16	1	410415	CEILING RING 290 DS	PMMA
17	1	421345	290 DS NATURAL EFFECT LENS	PET
18	1	410530,420,080	290 DS DIFFUSER PANEL	PMMA, PC
19	1	410520	DRESS RING 290 DS	PMMA
20	1	600290	290 DS DIFFUSER SEAL	EPDM FOAM
21	1	600445	D-SEAL HOLLOW	EPDM FOAM
22	1	600620	FOAM SEAL RECTANGULAR 3/16" X 1/4"	CLOSED CELL FOAM
	1	-	ALTERNATE (PROVIDED BY USER)	ACRYLIC SEALANT (VARIOUS)

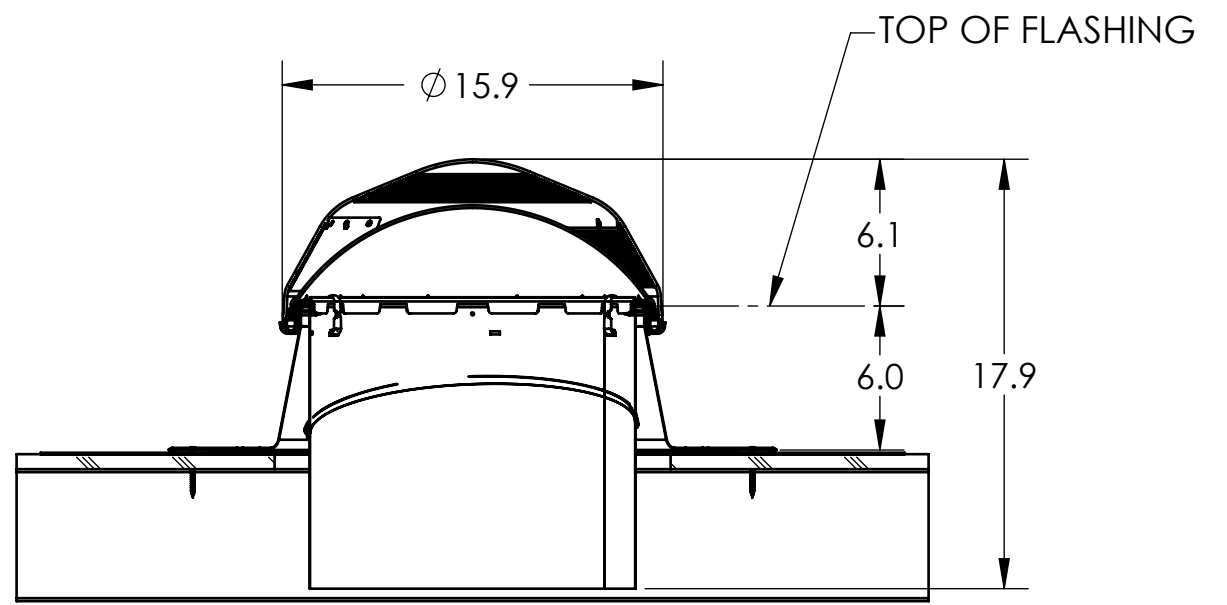
OPTIONAL COMPONENTS				
ITEM NO.	QTY.	PART NO.	DESCRIPTION	MATERIAL
23	2	420260	290 DS INSULATION PANEL (NOT SHOWN)	PMMA
24	4	420270	INSULATION PANEL CLIP (NOT SHOWN)	PMMA
25	1	VARIES**	TURRET EXTENSION	STEEL
26	1	410810	290 DS DOME SHOCK INNER	PMMA
27	1	570002	290 DS DAYLIGHT DIMMER	
28	1	510000, 501100	LIGHT KIT (SBCFL, 4-pin)	

* PN'S 200760, 200581, 230445, 230630
 ** PN'S 230760, 230540, 230550, 230560, 230570

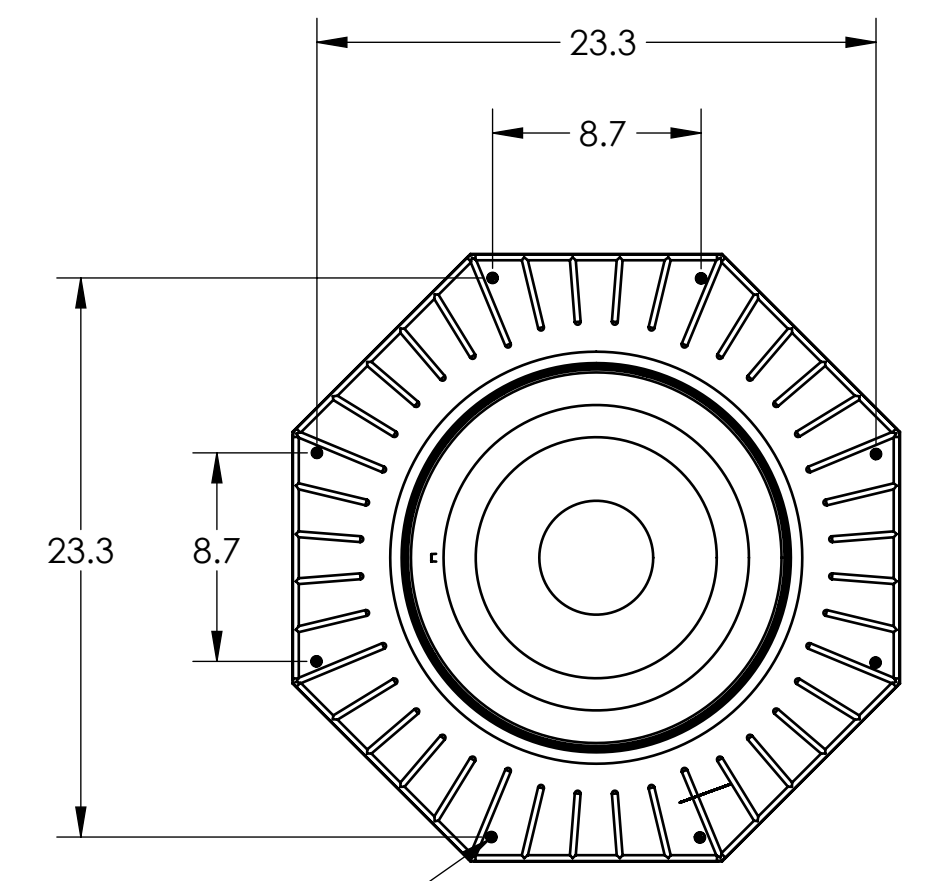
UNLESS OTHERWISE SPECIFIED: TOLERANCES ANGULAR: ±0.5° INCH X ± .1 .XX ± .01 .XXX ± .005 MILLIMETER [X] ± 2.5 [.XX] ± .25 [.XXX] ± .12	PROPRIETARY AND CONFIDENTIAL THE INFORMATION CONTAINED IN THIS DRAWING IS THE SOLE PROPERTY OF SOLATUBE. ANY REPRODUCTION IN PART OR AS A WHOLE WITHOUT THE WRITTEN PERMISSION OF SOLATUBE IS PROHIBITED.		<p>2210 OAK RIDGE WAY VISTA, CALIFORNIA 92081-8341 PH (760) 597-4400</p>
	MATERIAL -- FINISH --	DRAWN BY STEVENS CHECKED BY -- APPROVED BY --	
DO NOT SCALE DRAWING			TITLE: 290 DS (14") SOLATUBE ASSY PITCHED FLASHING 290-PF-HC-STD
		SIZE DWG. NO. 290-PF-HC-STD	REV 3
		SCALE: 1:12	SHEET 1 OF 5



PITCHED

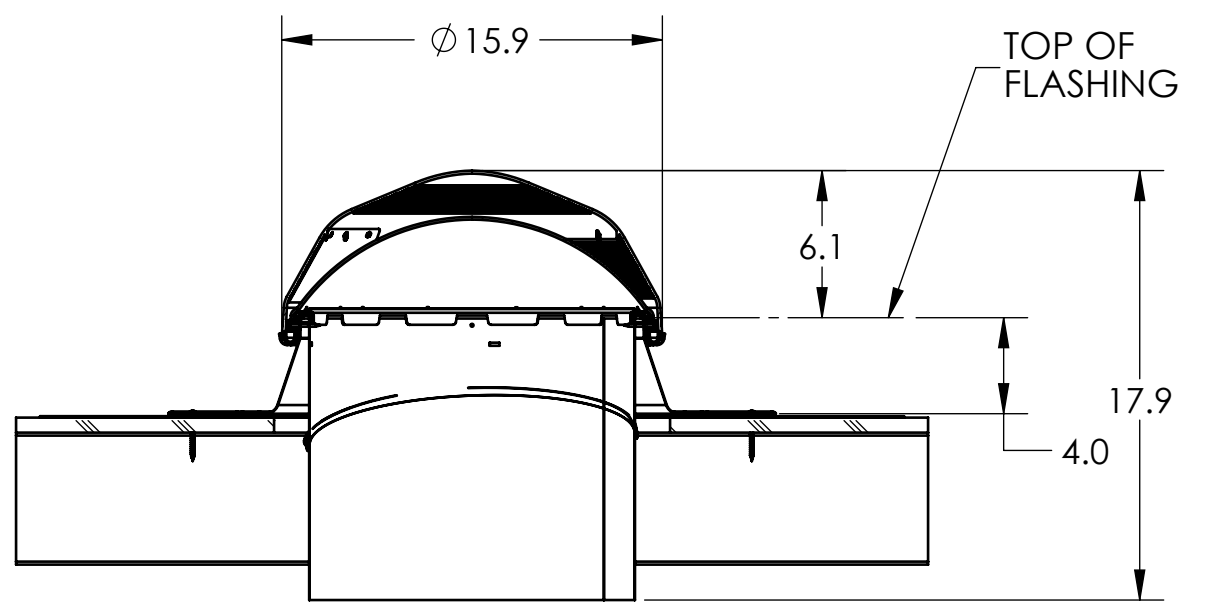


FLAT 6"

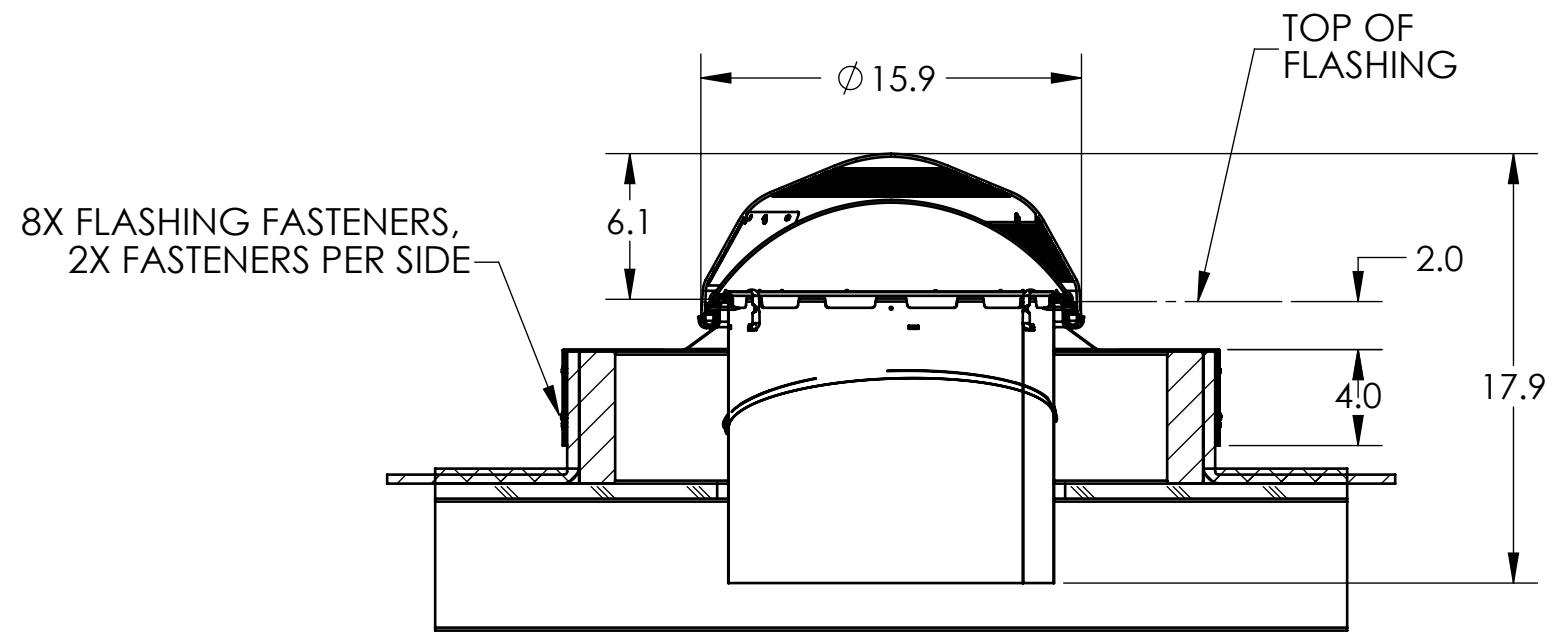


8X FLASHING FASTENERS

FLASHING FASTENER SPACING
FLAT 4", FLAT 6" & PITCHED



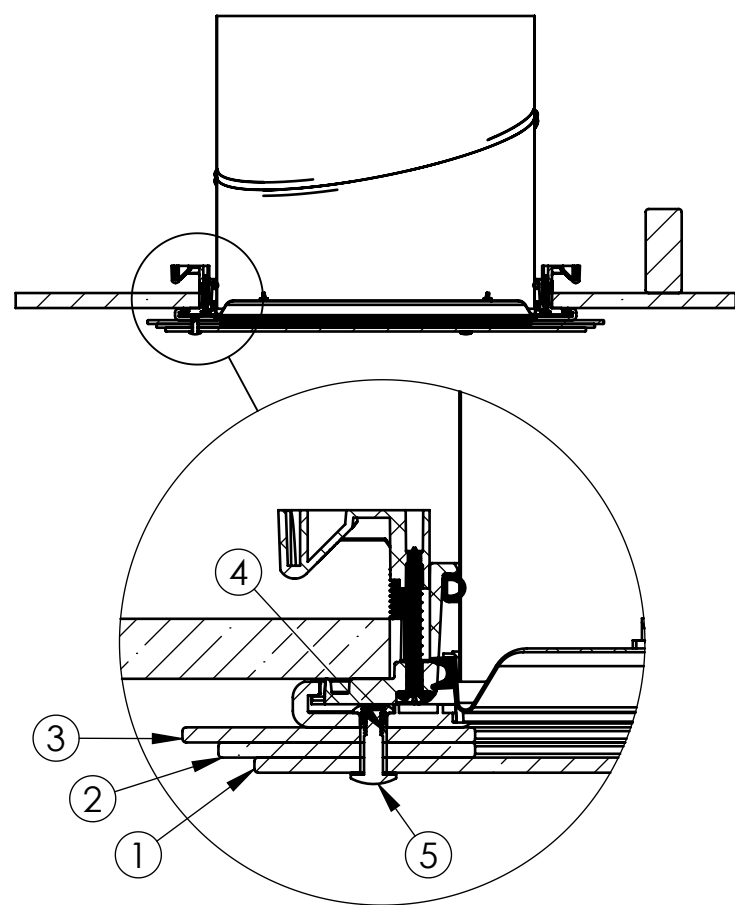
FLAT 4"



CURB

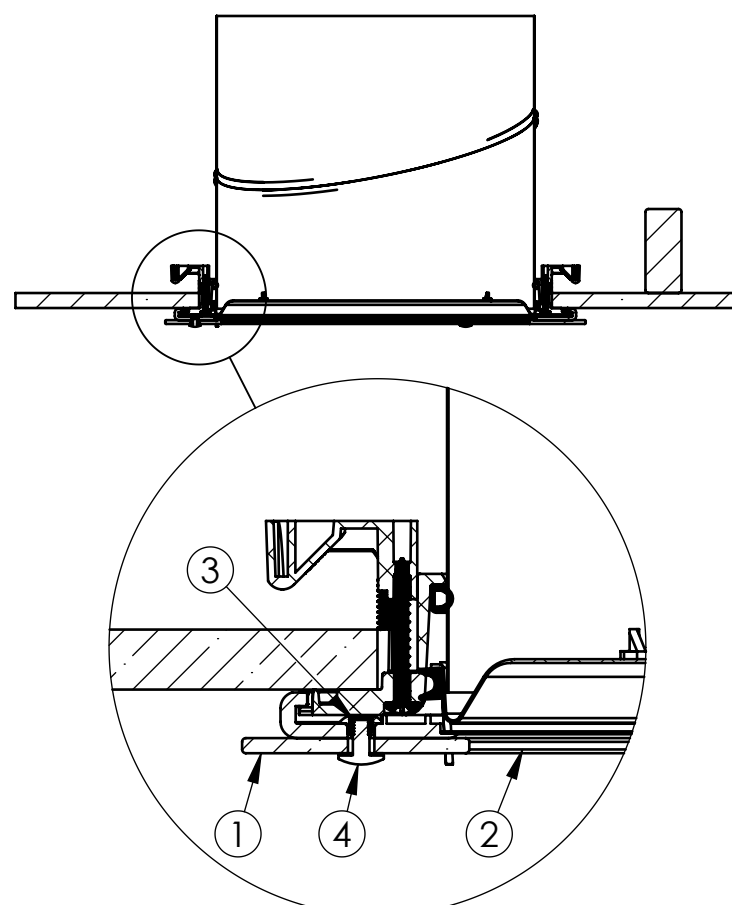
8X FLASHING FASTENERS,
2X FASTENERS PER SIDE

'TIER DROP' DIFFUSER ASSEMBLY



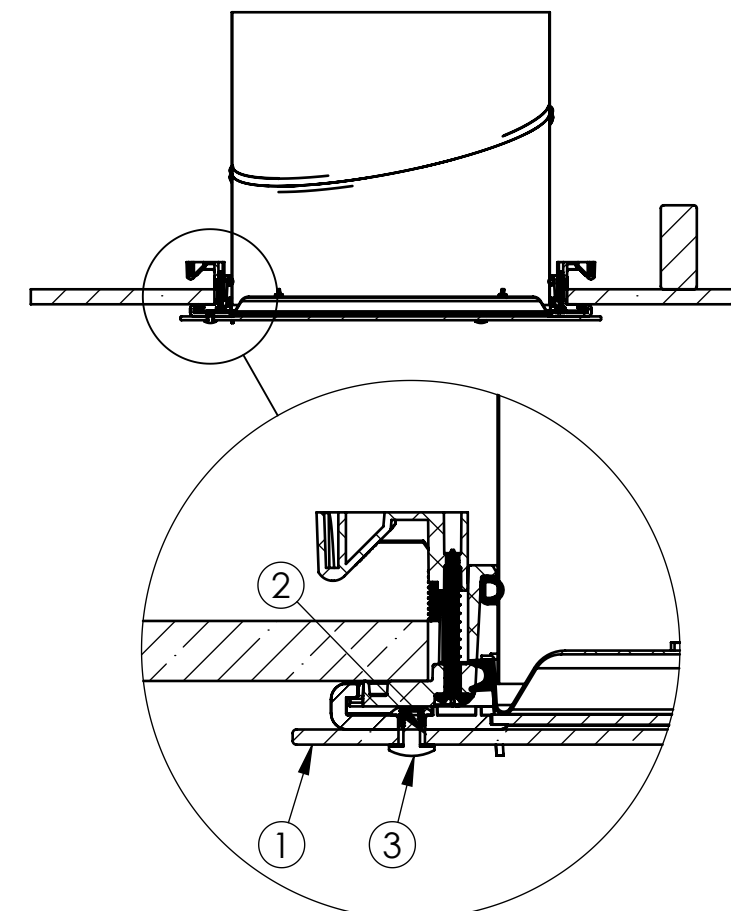
TIER DROP DIFFUSER ASSEMBLY COMPONENTS				
ITEM NO.	QTY.	PART NO.	DESCRIPTION	MATERIAL
1	1	400295	GLASS DISK 290 DS	TEMPERED GLASS
2	1	400296	MIDDLE GLASS RING 290 DS	TEMPERED GLASS
3	1	400297	TOP GLASS RING 290 DS	TEMPERED GLASS
4	3	700915	SPANNER NUT	STAINLESS STEEL
5	3	700925	SHOULDER SCREW M5	STAINLESS STEEL

'OPTIVIEW' DIFFUSER ASSEMBLY



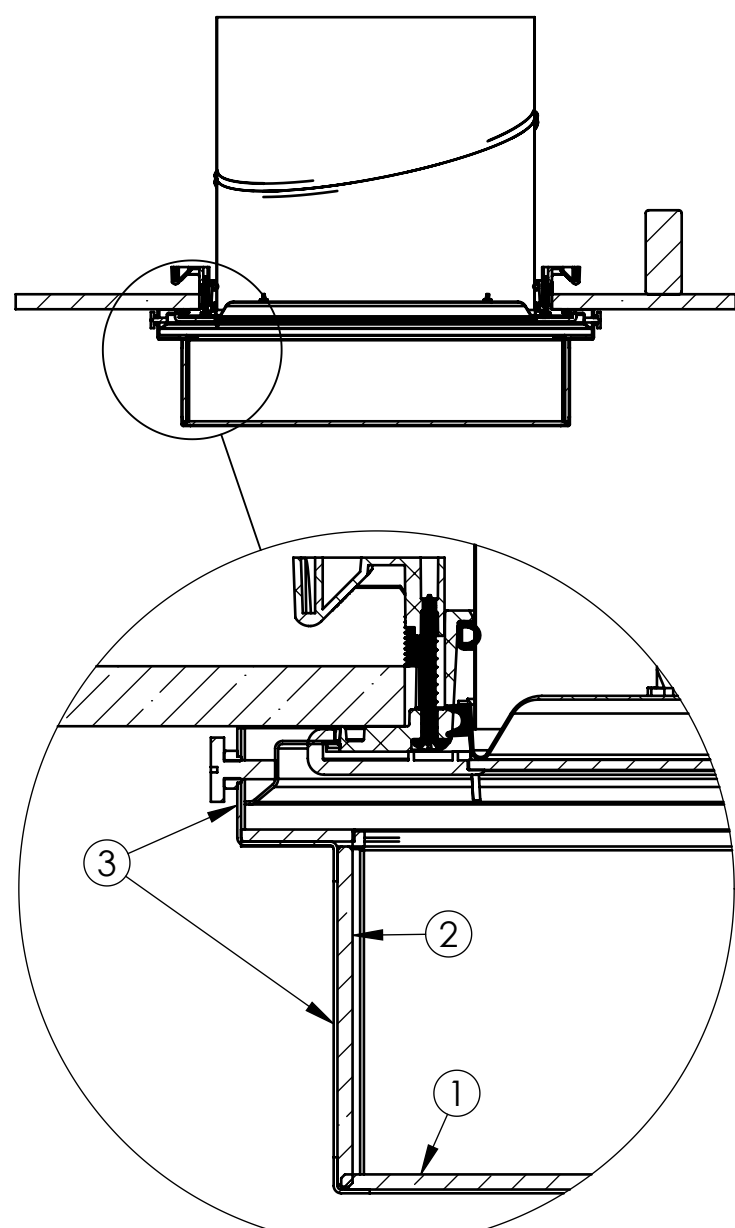
OPTIVIEW DIFFUSER ASSEMBLY COMPONENTS				
ITEM NO.	QTY.	PART NO.	DESCRIPTION	MATERIAL
1	1	400290	GLASS DISK CENTER CLEAR 290 DS	TEMPERED GLASS
2	1	420080	DIFFUSER 290 PANEL OPTIVIEW	PC
3	3	700915	SPANNER NUT	STAINLESS STEEL
4	3	700925	SHOULDER SCREW M5	STAINLESS STEEL

'JUST FROST' DIFFUSER ASSEMBLY



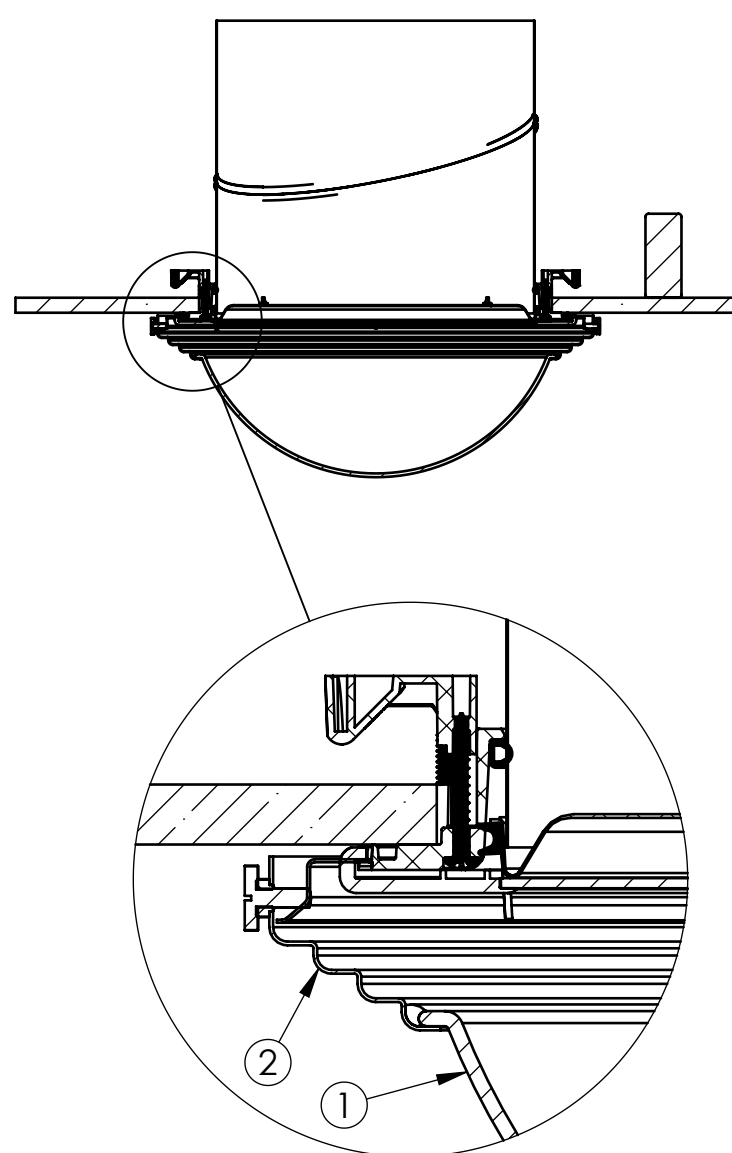
QUADRA FROST DIFFUSER ASSEMBLY COMPONENTS				
ITEM NO.	QTY.	PART NO.	DESCRIPTION	MATERIAL
1	1	400299	290 DS SQ. BOTTOM GLASS	TEMPERED GLASS
2	4	400294	290 DS SQ. SIDE GLASS	TEMPERED GLASS
3	1	492914	290 DS SQ. FRAME BRACKET ASSY.	STEEL

'QUADRA FROST' DIFFUSER ASSEMBLY



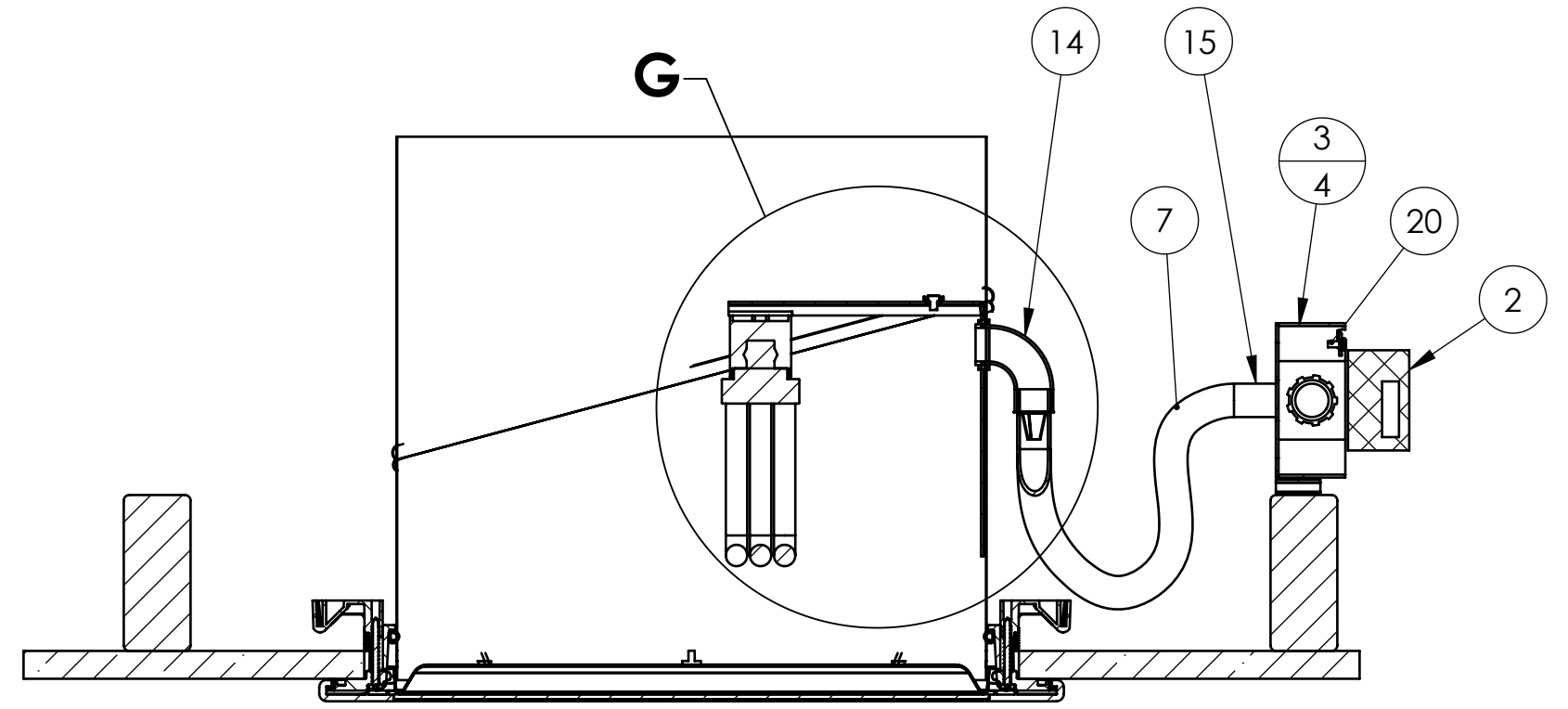
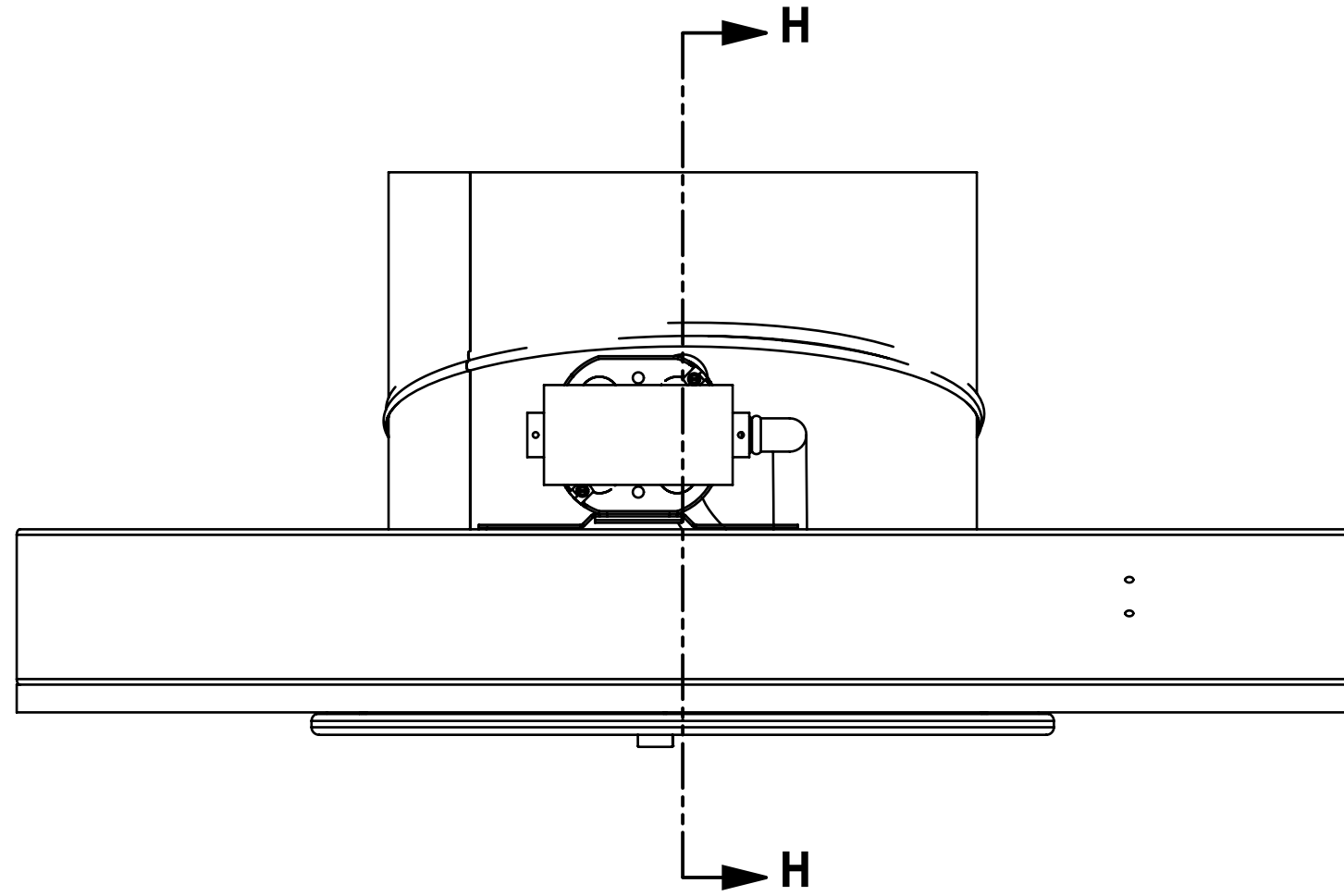
QUADRA FROST DIFFUSER ASSEMBLY COMPONENTS				
ITEM NO.	QTY.	PART NO.	DESCRIPTION	MATERIAL
1	1	400299	290 DS SQ. BOTTOM GLASS	TEMPERED GLASS
2	4	400294	290 DS SQ. SIDE GLASS	TEMPERED GLASS
3	1	492914	290 DS SQ. FRAME BRACKET ASSY.	STEEL

'AURORA GLO' DIFFUSER ASSEMBLY



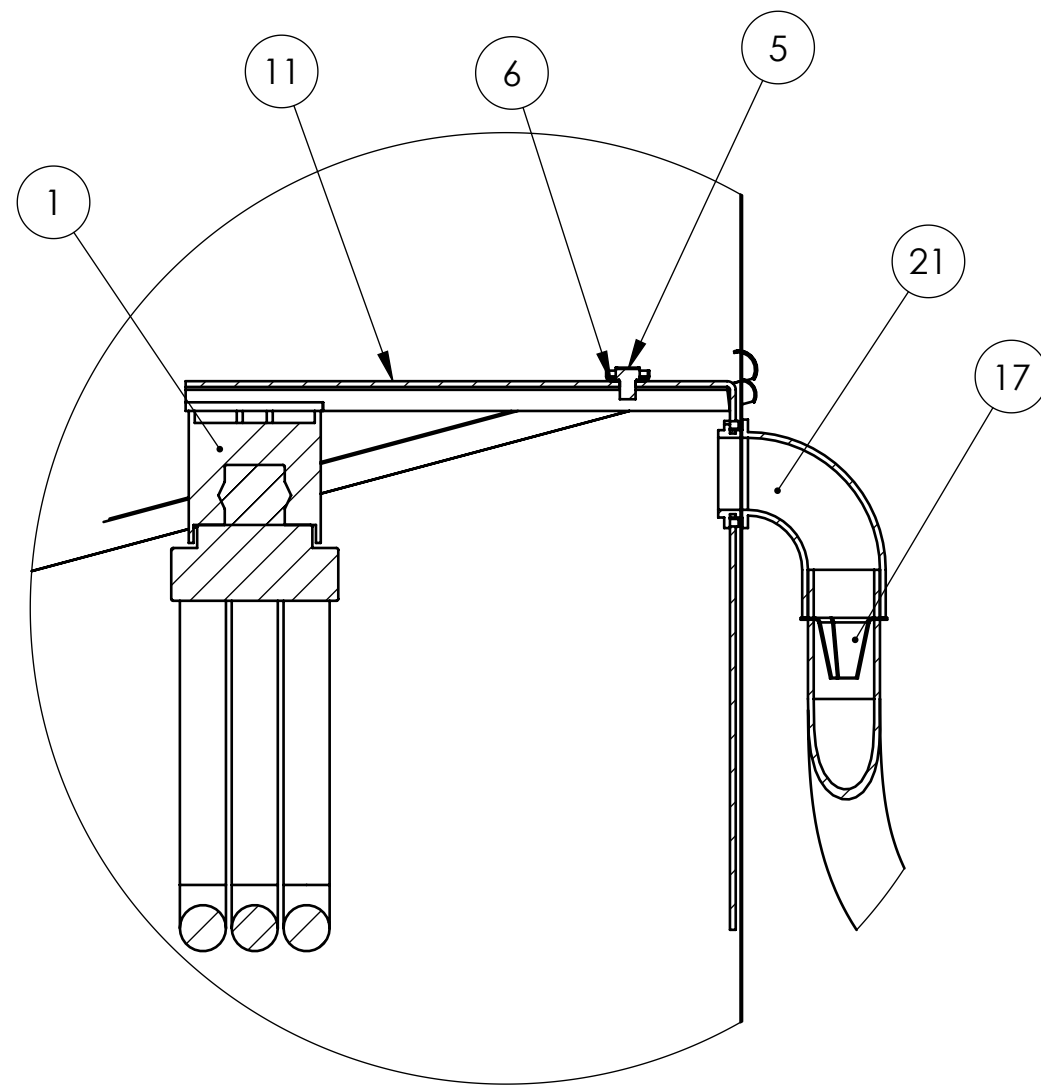
AURORA GLO DIFFUSER ASSEMBLY COMPONENTS				
ITEM NO.	QTY.	PART NO.	DESCRIPTION	MATERIAL
1	1	400292	290 DS GLASS ROUND	TEMPERED GLASS
2	4	492902	290 DS ROUND BOWL ROSE ASSY.	STEEL

**LIGHT KIT 26 WATT COMPACT
FLUORESCENT
FOR 290 DS SOLATUBE**



SECTION H-H

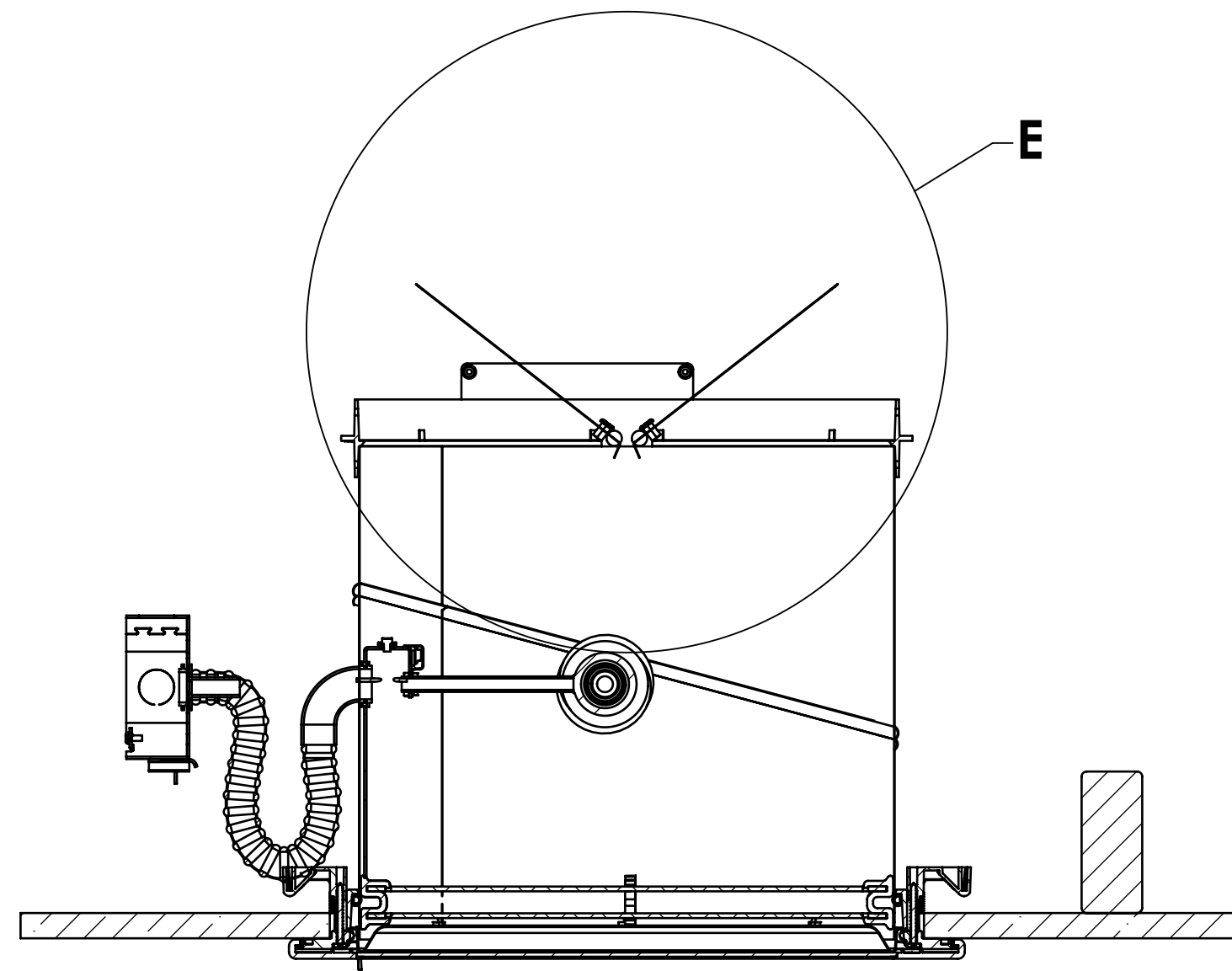
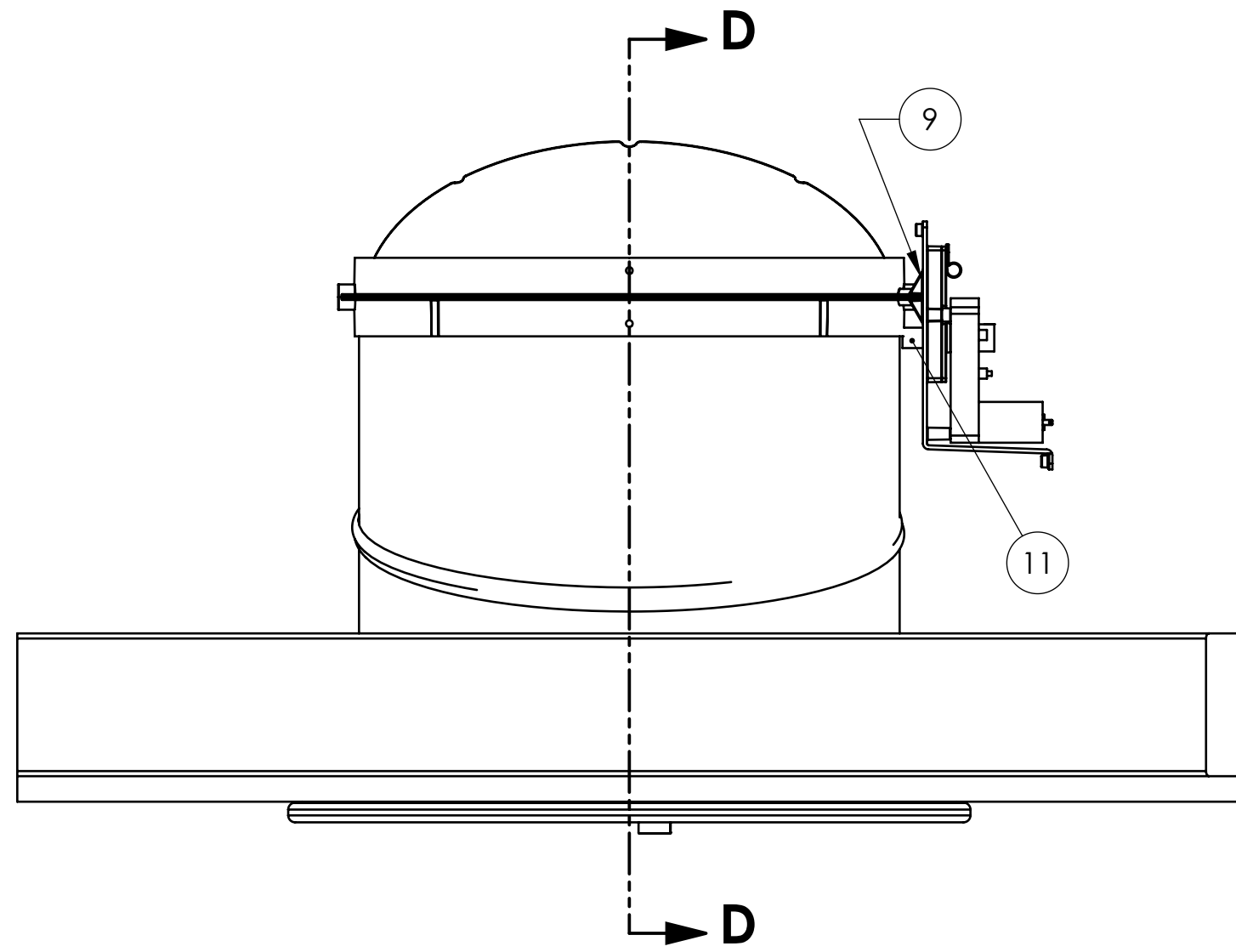
NOTE:
CFL (4-PIN TYPE) LIGHT ASSEMBLY SHOWN ASSEMBLED
TO 290DS BOTTOM ANGLE ADAPTER;
SCREW BASE CFL (SBCFL) OPTION ALSO AVAILABLE



**DETAIL G
SCALE 1:2**

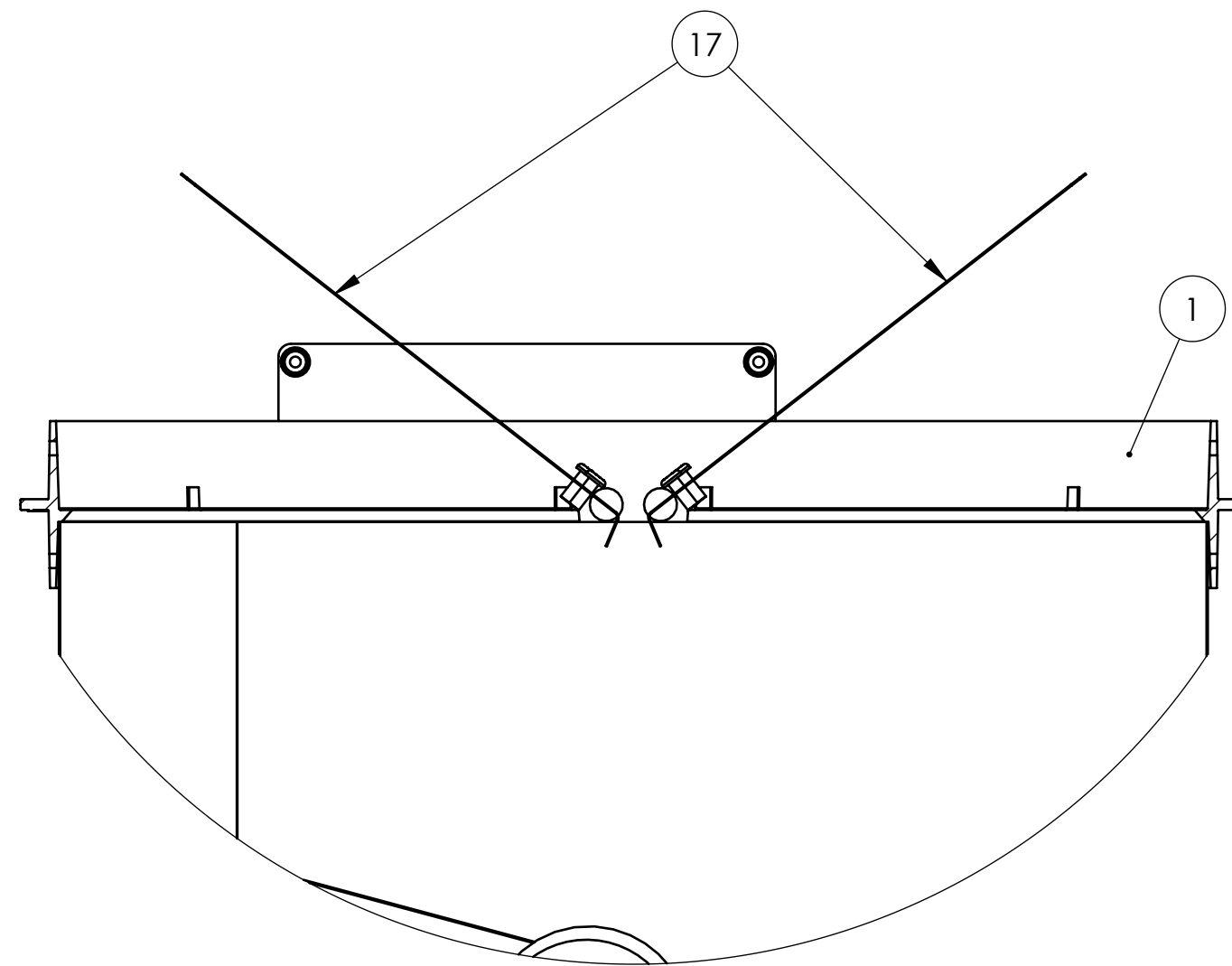
ITEM NO.	PART NUMBER	DESCRIPTION	QTY.
1	500110	LAMP HOLDER 4-PIN	1
2	500120	BALLAST, ELECTRIC 26W	1
3	500550	JUNCTION BOX 4" W/BRACKET	1
4	500560	JUNCTION BOX 4" COVER	1
5	500650	SCREW #8-32 X 1/4"	1
6	500660	WASHER #8 GROUND CUP	1
7	500910	CONDUIT FLEXIBLE 3/8" X 48"	1
8	501040	WIRE LEAD BLACK 18 AWG 62" (NOT SHOWN)	1
9	501050	WIRE LEAD WHITE 18 AWG 62" (NOT SHOWN)	1
10	501060	WIRE LEAD GREEN 18 AWG 62" (NOT SHOWN)	1
11	501440	BRACKET CFL 26 WATT	1
12	501470	ZIP TIE, HELICAL WRAP (NOT SHOWN)	1
13	501500	WASHER FENDER 1/4" X 1-1/4" (NOT SHOWN)	1
14	500230	CONNECTOR 90 DEG 3/8	1
15	500240	CONNECTOR STRAIGHT 3/8	1
16	500530	SCREW HEX #8 X .75" (NOT SHOWN)	4
17	500540	BUSHING ANTI-SHORT RED	1
18	500630	NUT WIRE 73B (NOT SHOWN)	6
19	500640	SLEEVE CRIMP 10-18 GA (NOT SHOWN)	1
20	501070	SCREW GROUND 10-32 X .375	1
21	501080	CONDUIT FOAM SEAL 1/8" H X 3/4"W	4

290DS DAYLIGHT DIMMER
FOR 290DS SOLATUBE



SECTION D-D

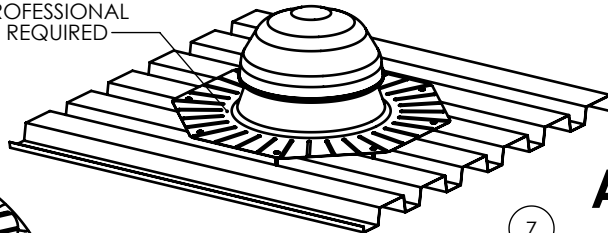
NOTE:
DAYLIGHT DIMMER ASSEMBLY SHOWN ASSEMBLED TO
290DS BOTTOM ANGLE ADAPTER



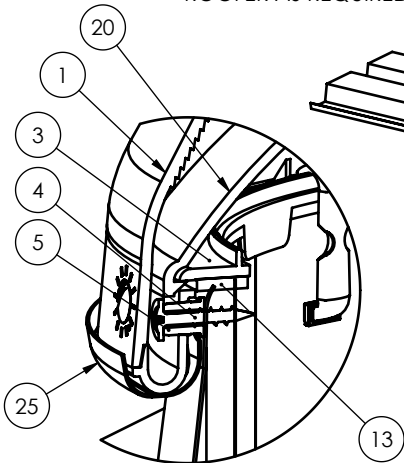
DETAIL E
SCALE 1 : 2

ITEM NO.	PART NUMBER	DESCRIPTION	QTY.
1	420780	RING 14" DAYLIGHT DIMMER	1
2	570005	POWER SUPPLY (NOT SHOWN)	1
3	570008	RETAINER, E-RING, 5/16 (NOT SHOWN)	4
4	570009	PCB, MOTOR CONTROL (NOT SHOWN)	1
5	570010	MOTOR GEARED (NOT SHOWN)	1
6	570015	CAM, DRIVE MECHANISM (NOT SHOWN)	1
7	570016	DOG, DRIVE MECHANISM (NOT SHOWN)	1
8	570018	LID, DRIVE MECHANISM (NOT SHOWN)	1
9	570020	MOUNT, JUNCTION BOX	1
10	570021	COVER, JUNCTION BOX	1
11	570022	SPACER, NYLON 1/2"	1
12	570024	CABLE CLAMP, DLD (NOT SHOWN)	1
13	570025	CLIP, RIGHT	2
14	570026	CLIP, LEFT	2
15	570027	CLIP, BACK RIGHT	2
16	570028	CLIP, BACK LEFT	2
17	570031	DISK, 14" DIMMER	2
18	721050	SCREW TRILOB #4 X 3/16 (NOT SHOWN)	4
19	721055	SCREW TRILOB #6 X 3/8 (NOT SHOWN)	8
20	721060	SCREW TRILOB #8 X 3/8 (NOT SHOWN)	8
21	721065	SCREW TRILOB #8 X 1.0" (NOT SHOWN)	4
22	721070	SCREW TRILOB #12 X 1/2 (NOT SHOWN)	2

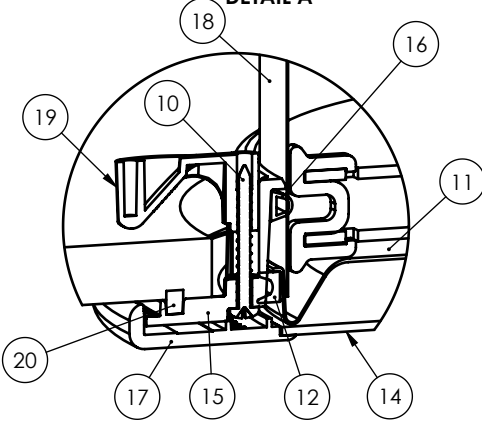
NOTE:
FLASHING PROVIDED BY
SOLATUBE, WEATHERPROOFING
DETERMINED BY SOLATUBE
GENERAL CONTRACTOR
AND/OR PROFESSIONAL
ROOFER AS REQUIRED



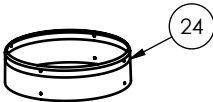
METAL ROOF
TYPE II OR III CONSTRUCTION
WITH STANDARD DIFFUSER ASSEMBLY



DOME ASSEMBLY
DETAIL A



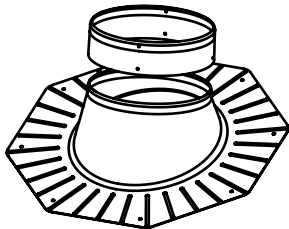
CEILING RING ASSEMBLY
DETAIL B



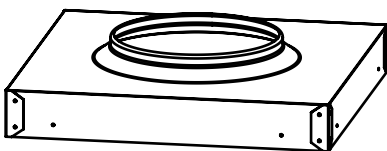
TURRET EXTENSION FOR FLASHING



NO-PITCH FLASHING



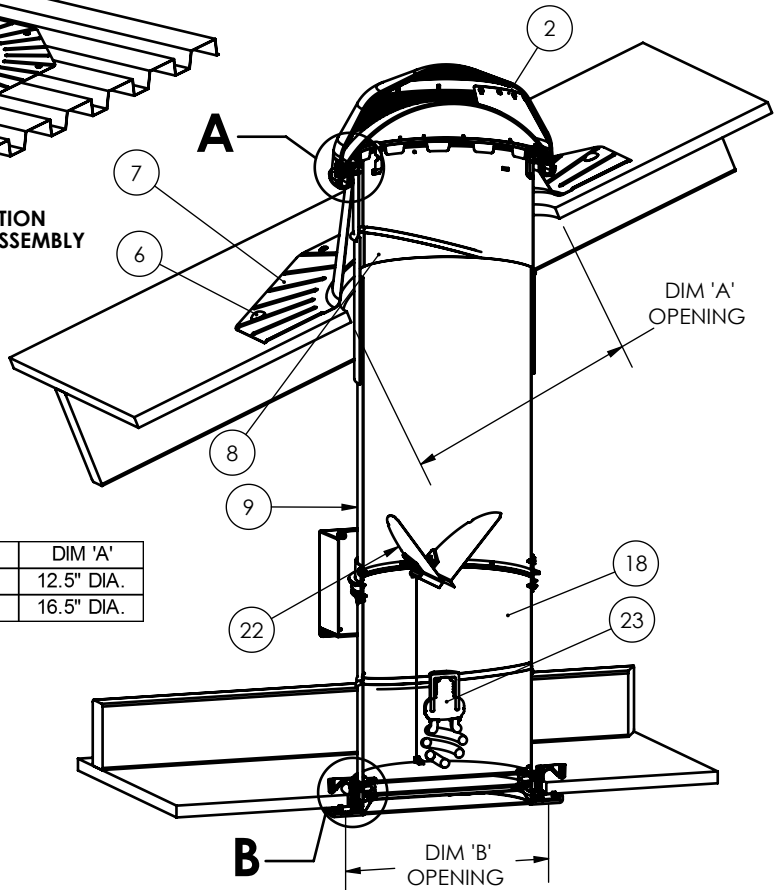
PITCHED FLASHING



CURB FLASHING



UNIVERSAL TILE FLASHING



WOOD ROOF
TYPE IV OR V CONSTRUCTION

	DIM 'A'
160 DS SOLATUBE	12.5" DIA.
290 DS SOLATUBE	16.5" DIA.

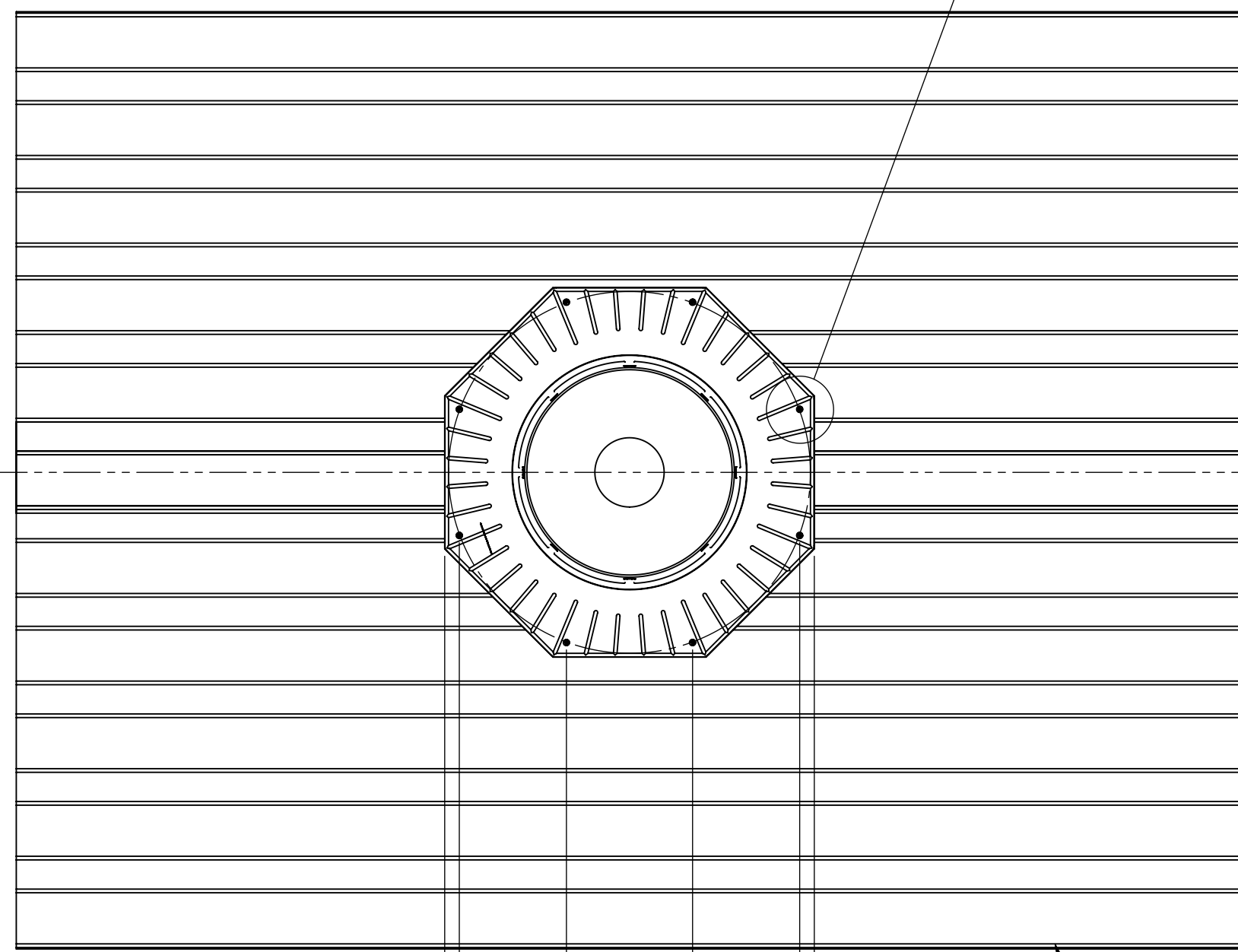
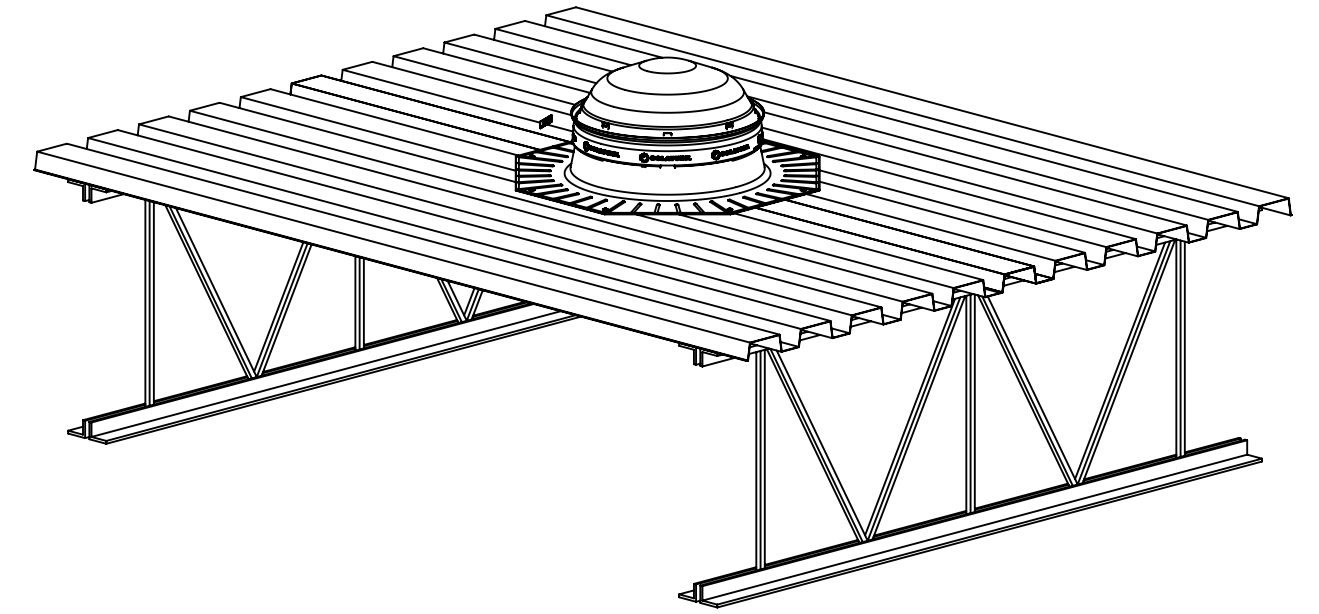
ITEM NO.	QTY.	DESCRIPTION
1	1	OUTER DOME
2	1	LIGHT TRACKER
3	1	DOME RING
4	4	SCREW #8 X 1"
5	4	DOME RING SPACER
6*	8	SCREW #10 X 2" SMS
7	1	FLASHING
8	1	TOP TUBE
9	1	TUBE 16" EXTENSION
10	4	SCREW #8 X 1.5" SMS
11	1	EFFECT LENS
12	1	EFFECT LENS SEAL
13	1	DOME RING SEAL
14	1	DIFFUSER PANEL
15	1	CEILING RING
16	1	CEILING RING 'D' SEAL
17	1	DRESS RING
18	1	BOTTOM TUBE
19	4	CLAMP
20	1	CEILING RING RECTANGULAR SEAL

OPTIONAL COMPONENTS		
ITEM NO.	QTY.	DESCRIPTION
21	1	INNER DOME
22	1	DAYLIGHT DIMMER
23	1	LIGHT FIXTURE
24	1	TURRET EXTENSION
25	1	DOME EDGE PROTECTION BAND

* USE (8) #10 TEK SCREWS FOR METAL ROOF

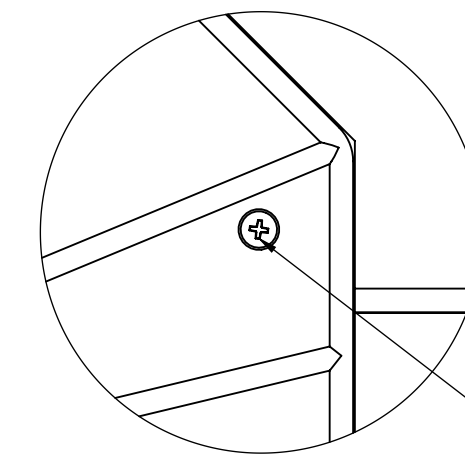
FIGURE 1 - 160 DS & 290 DS SOLATUBE WITH DETAILS

REVISIONS				
ECO	REV.	DESCRIPTION	DATE	INC.
	1	INITIAL RELEASE	4/22/08	CS



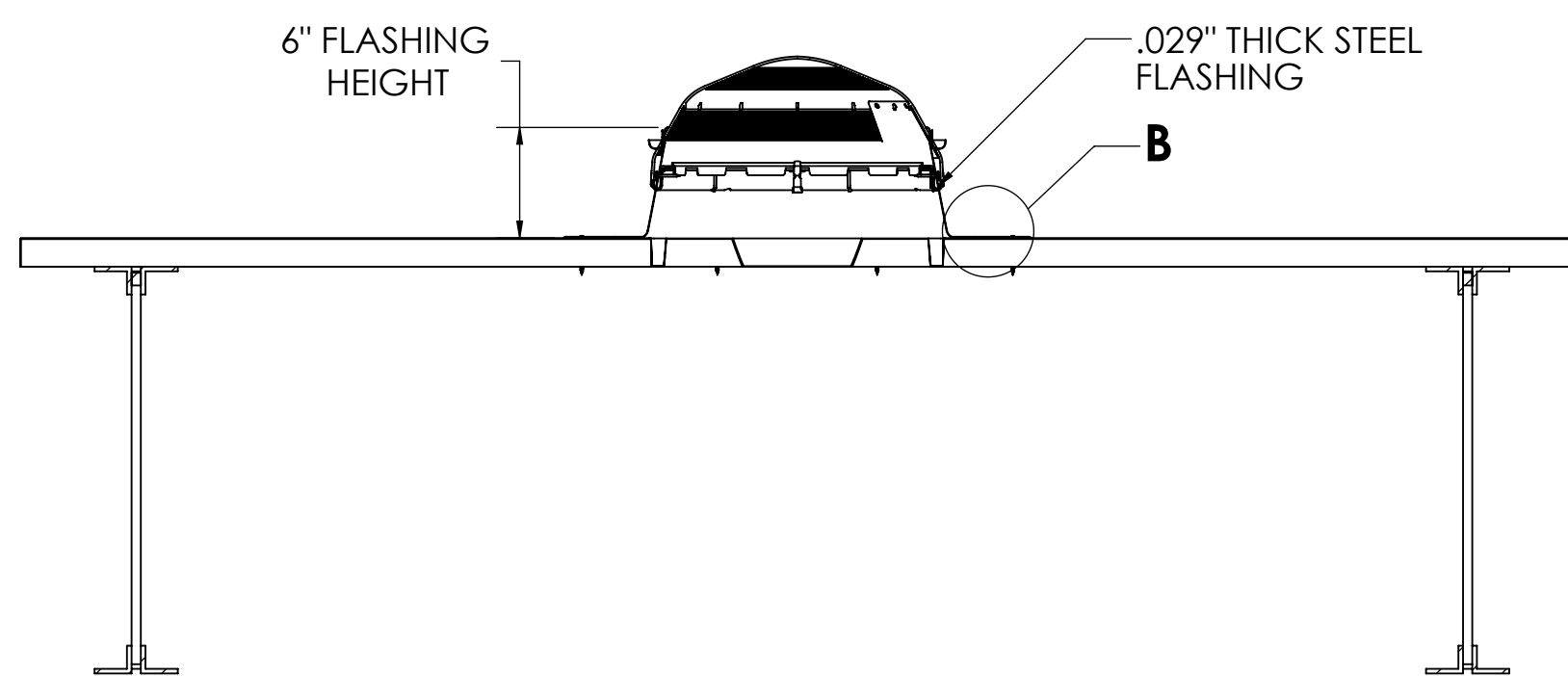
8 5/8" TYP.
23 3/8" TYP.
25 3/8" TYP.

.029" THICK STEEL ROOF (B-DECK) BY OTHERS

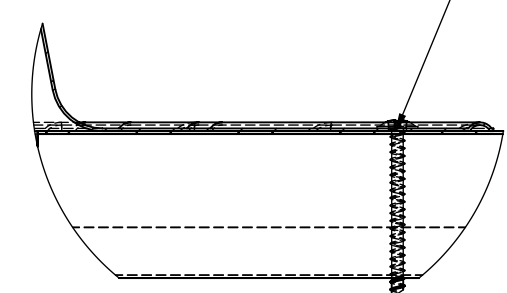


DETAIL C
SCALE 1 : 2

8X FASTENING POINTS
NOTE: THE FREQUENCY OF ALIGNMENT BETWEEN METAL DECK SURFACE AND PRE-PUNCHED FASTENER HOLES MAY VARY FROM 2 TO 6 PLACES (DEPENDING ON FLASHING ORIENTATION).



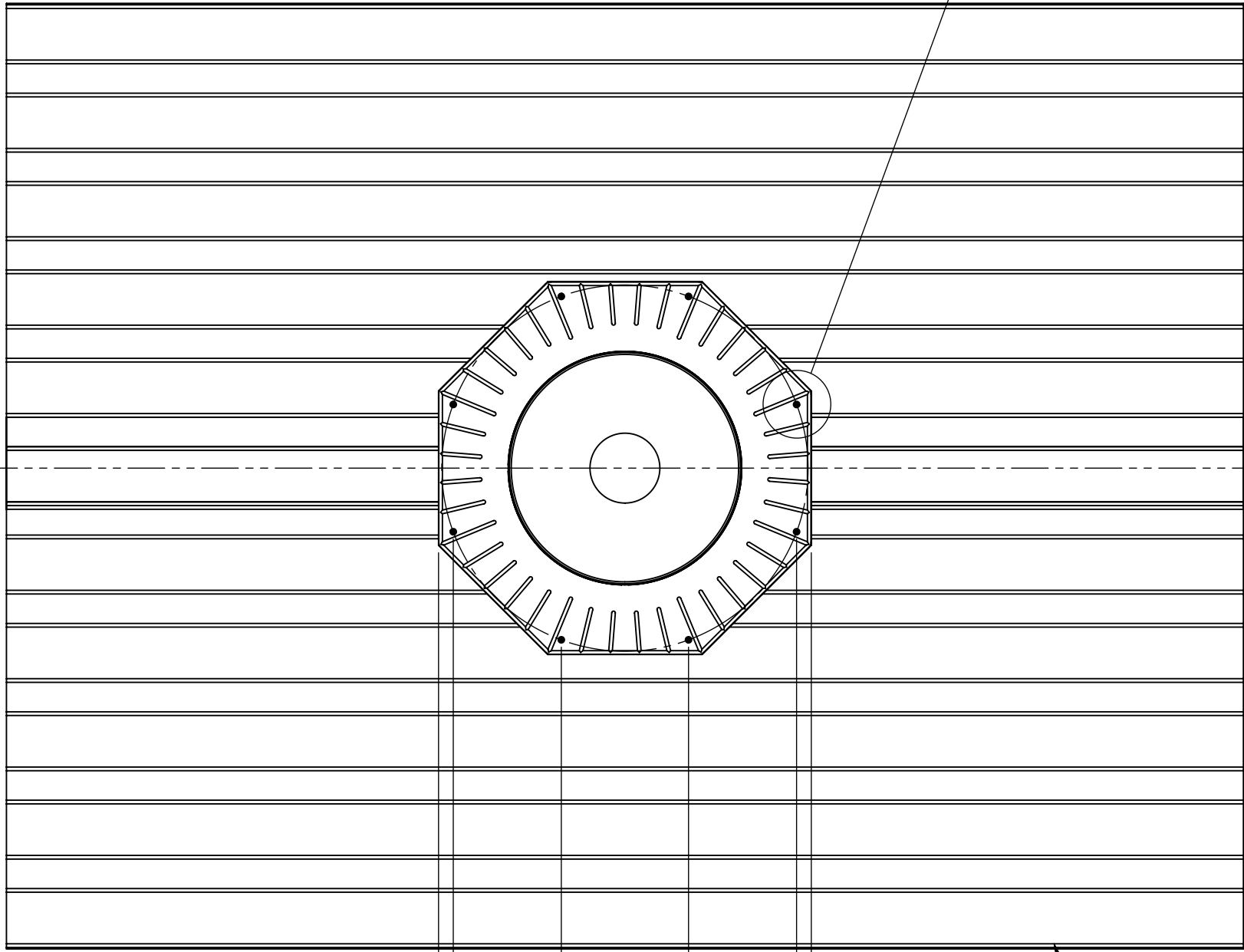
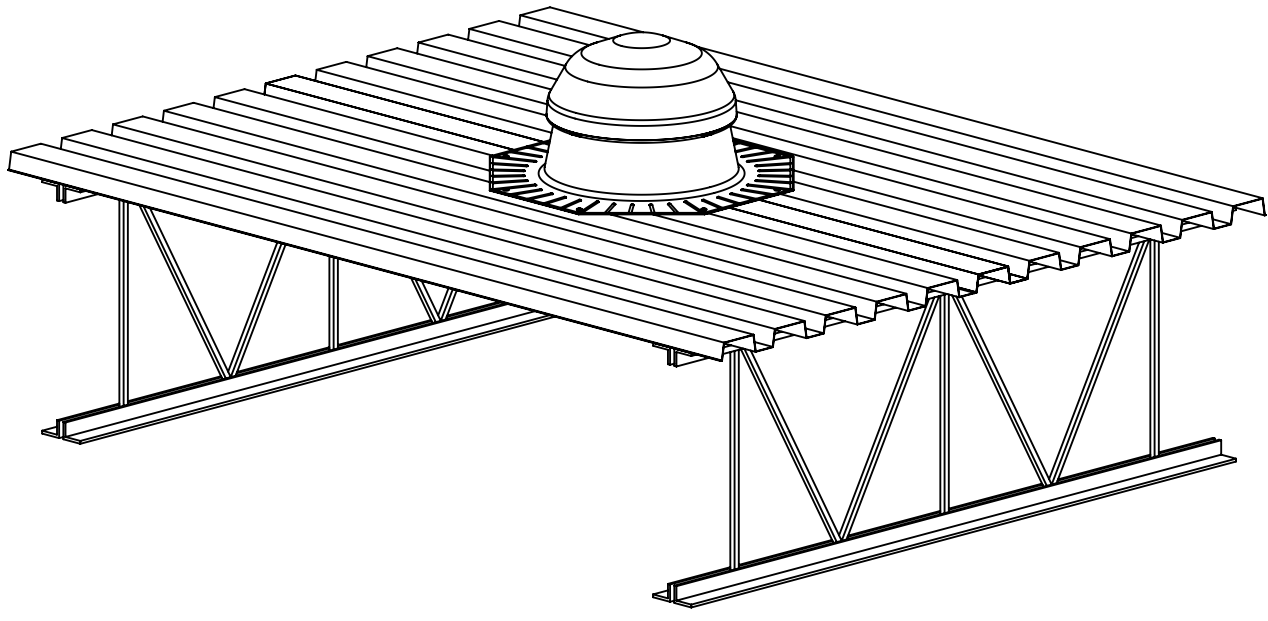
SECTION A-A



DETAIL B
SCALE 1 : 2

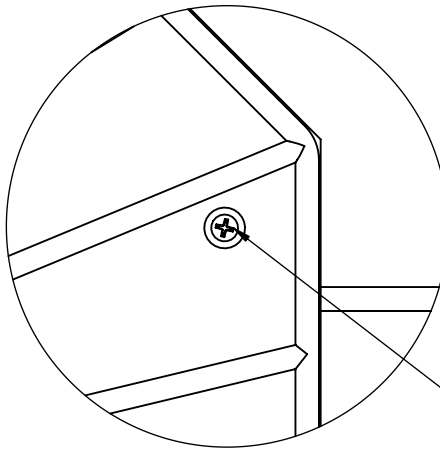
UNLESS OTHERWISE SPECIFIED: DIMENSIONS ARE IN INCHES TOLERANCES: ANGULAR: ±0.5° .X ± .1 .XX ± .02 .XXX ± .005		FRACTION ± 1/64		PROPRIETARY AND CONFIDENTIAL THE INFORMATION CONTAINED IN THIS DRAWING IS THE SOLE PROPERTY OF SOLATUBE. ANY REPRODUCTION IN PART OR AS A WHOLE WITHOUT THE WRITTEN PERMISSION OF SOLATUBE IS PROHIBITED.		 2210 OAK RIDGE WAY VISTA, CALIFORNIA 92081-8341 PH (760) 597-4400	
MATERIAL --		DRAWN BY STEVENS		DATE 4/22/08		TITLE: 290 DS COMMERCIAL ASSY.	
FINISH --		CHECKED BY --		DATE --		SIZE C	
DO NOT SCALE DRAWING		APPROVED BY		DATE		DWG. NO. 290-6F-BDECK	
						REV 1	
				SCALE: 1:10		SHEET 1 OF 1	

REVISIONS				
ECO	REV.	DESCRIPTION	DATE	INC.
	1	INITIAL RELEASE	4/22/08	CS



8 5/8" TYP.
 23 3/8" TYP.
 25 3/8" TYP.

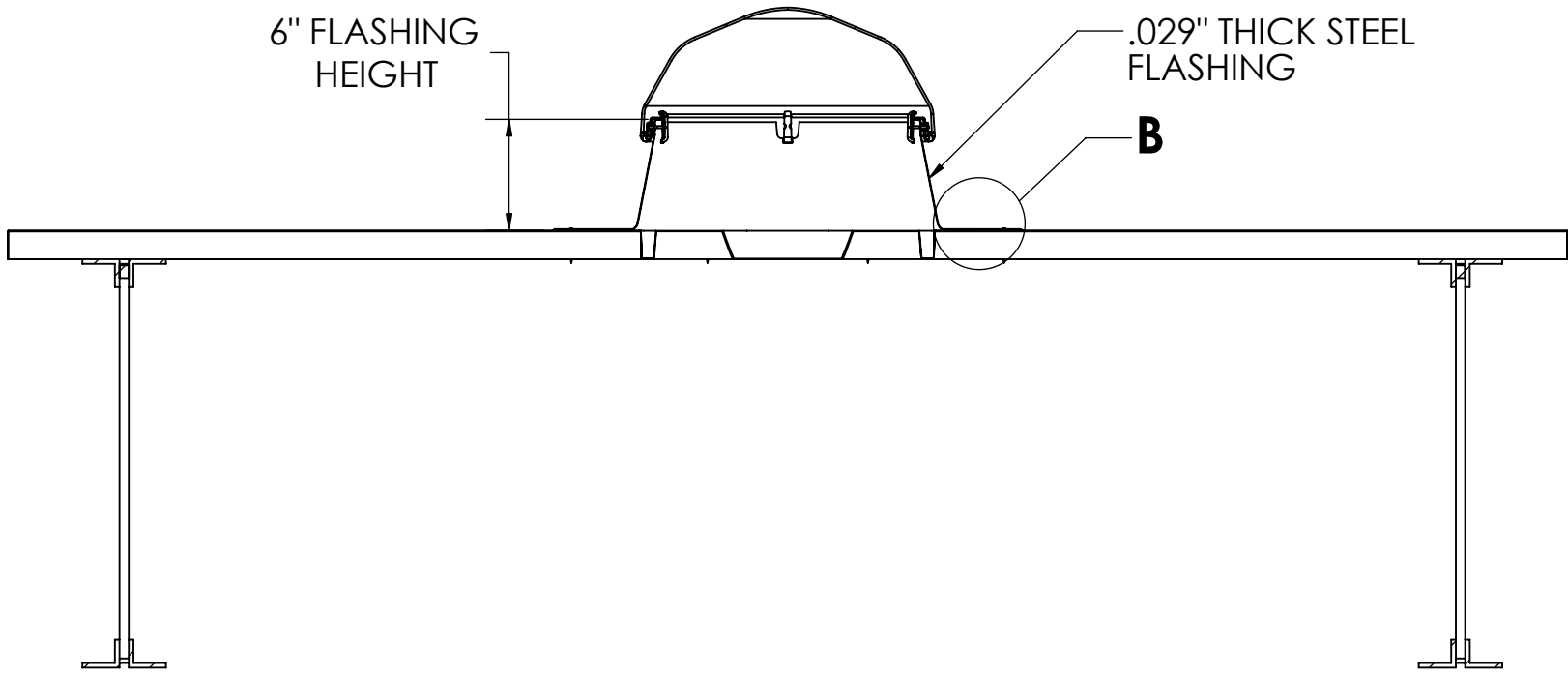
.029" THICK STEEL ROOF (B-DECK) BY OTHERS



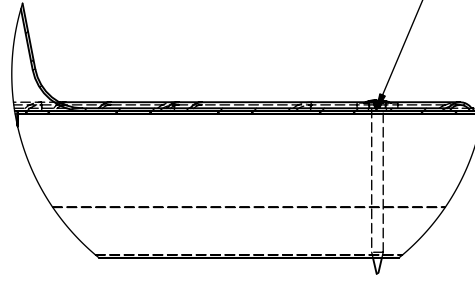
DETAIL C
SCALE 1 : 2

8X FASTENING POINTS


NOTE: THE FREQUENCY OF ALIGNMENT BETWEEN METAL DECK SURFACE AND PRE-PUNCHED FASTENER HOLES MAY VARY FROM 2 TO 6 PLACES (DEPENDING ON FLASHING ORIENTATION).



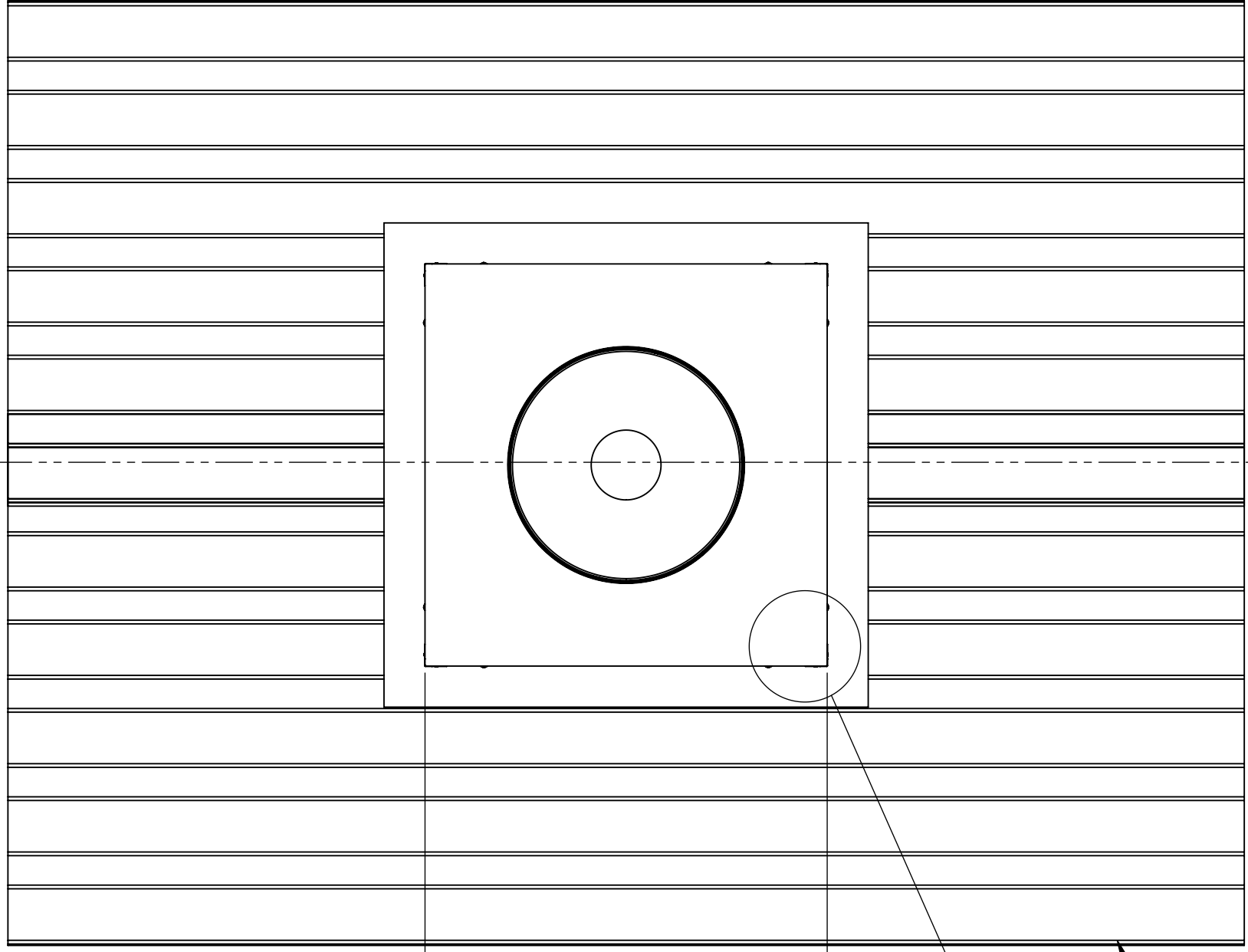
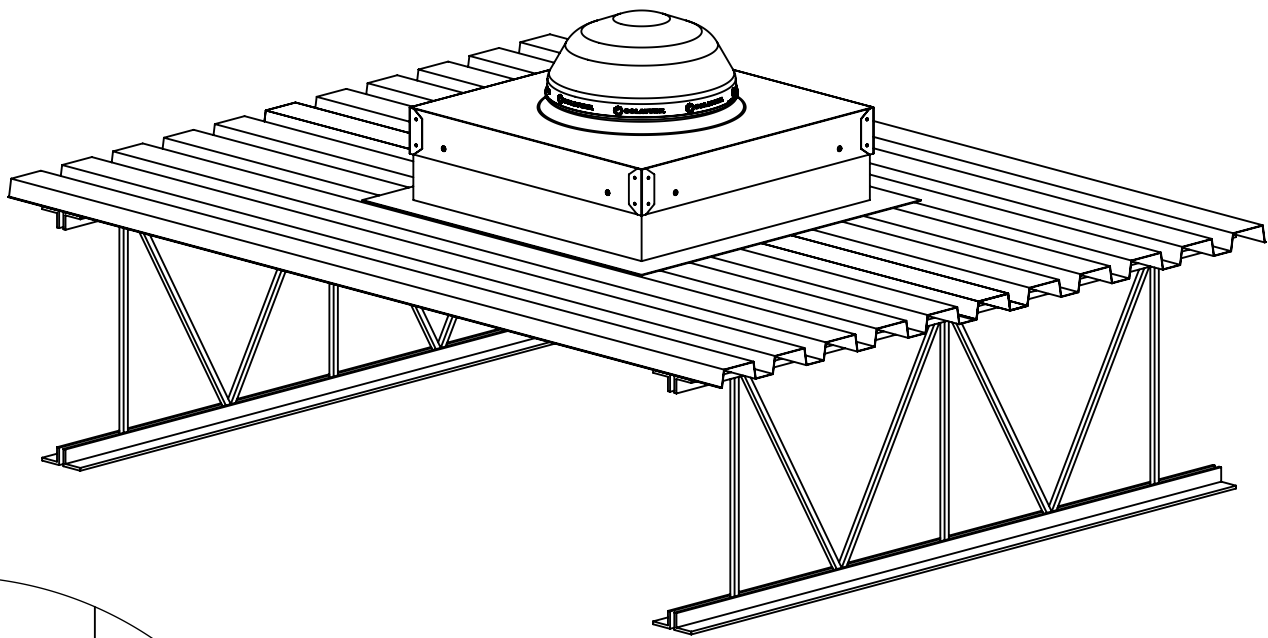
SECTION A-A



DETAIL B
SCALE 1 : 2

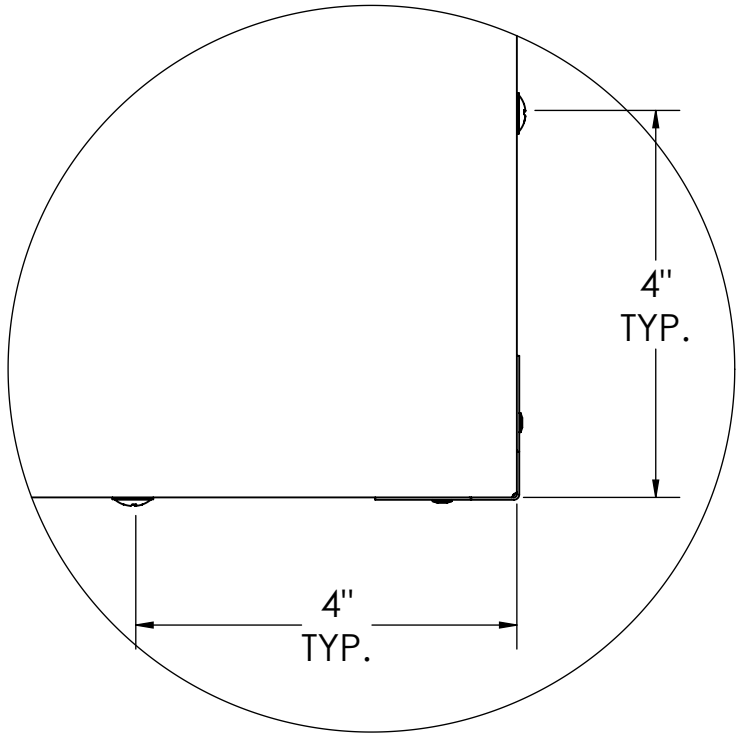
UNLESS OTHERWISE SPECIFIED: DIMENSIONS ARE IN INCHES TOLERANCES: ANGULAR: ±0.5° .X ± .1 .XX ± .02 .XXX ± .005		FRACTION ± 1/64		PROPRIETARY AND CONFIDENTIAL THE INFORMATION CONTAINED IN THIS DRAWING IS THE SOLE PROPERTY OF SOLATUBE. ANY REPRODUCTION IN PART OR AS A WHOLE WITHOUT THE WRITTEN PERMISSION OF SOLATUBE IS PROHIBITED.		 2210 OAK RIDGE WAY VISTA, CALIFORNIA 92081-8341 PH (760) 597-4400	
MATERIAL --		DRAWN BY STEVENS		DATE 4/22/08		TITLE: 290 DS	
FINISH --		CHECKED BY --		DATE --		TYPE II & III ROOF ASSY.	
DO NOT SCALE DRAWING		APPROVED BY		DATE		SIZE: C DWG. NO.: 290-6F-TYPE II_III SCALE: 1:10	
						REV: 1 SHEET 1 OF 1	

REVISIONS				
ECO	REV.	DESCRIPTION	DATE	INC.
	1	INITIAL RELEASE	4/22/08	CS
	2		10/12/2015	CS

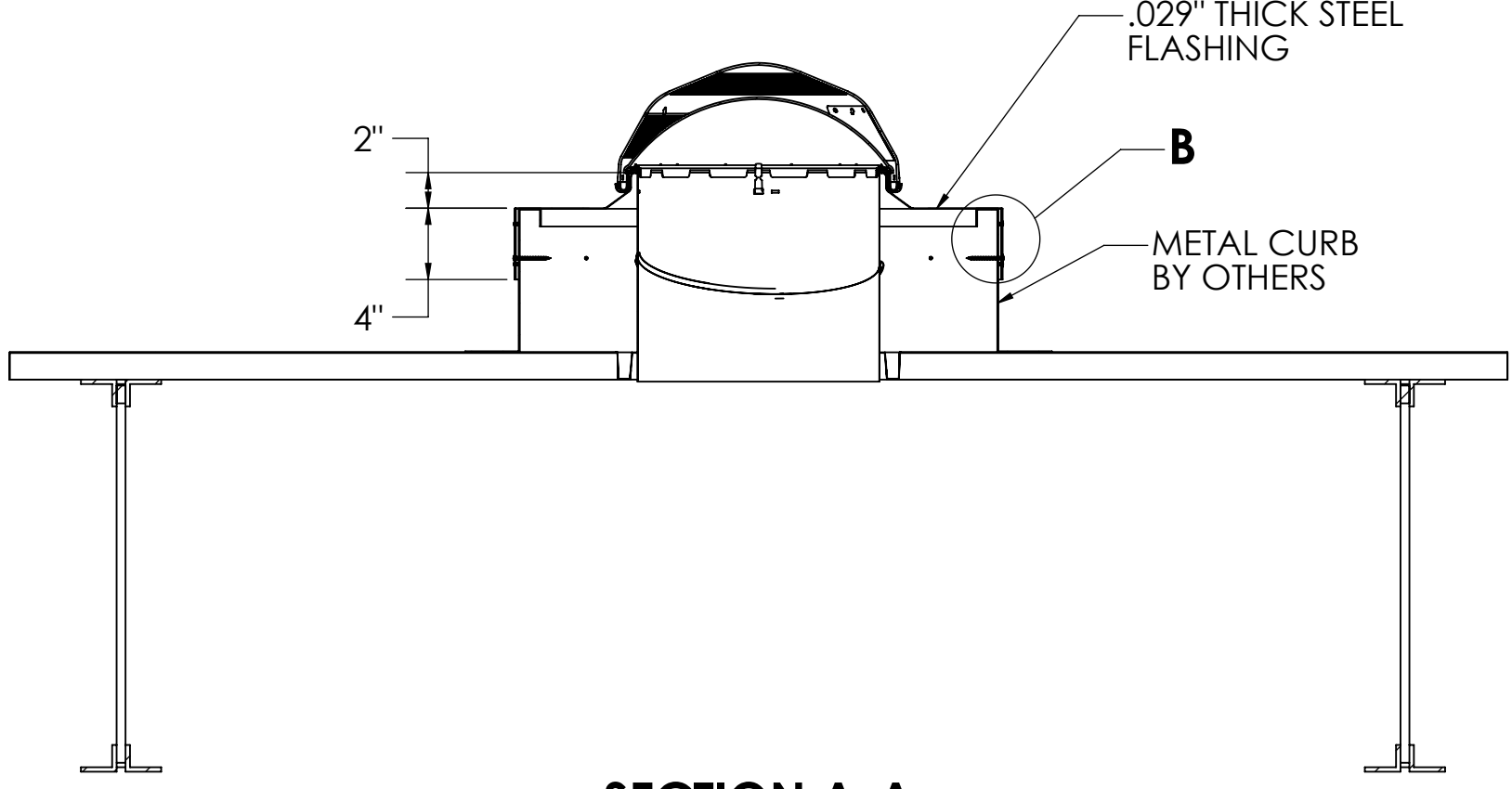


27 3/8" SQUARE

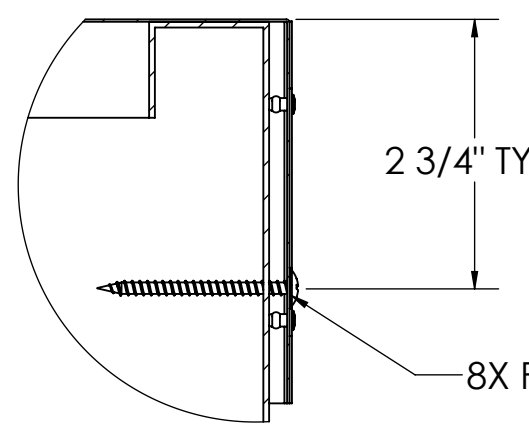
.029" THICK METAL ROOF (B-DECK) BY OTHERS



DETAIL C
SCALE 1 : 2
TYP.



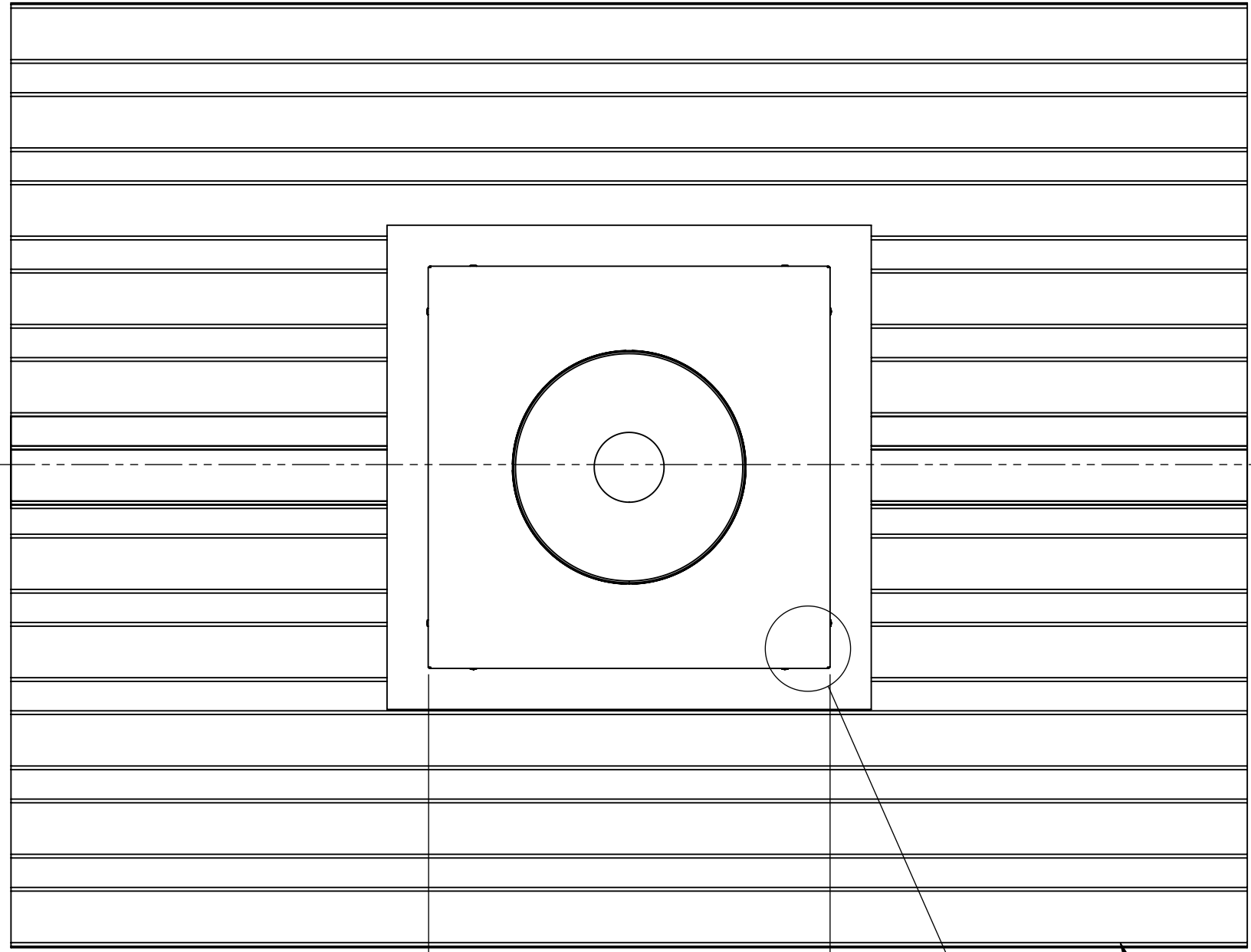
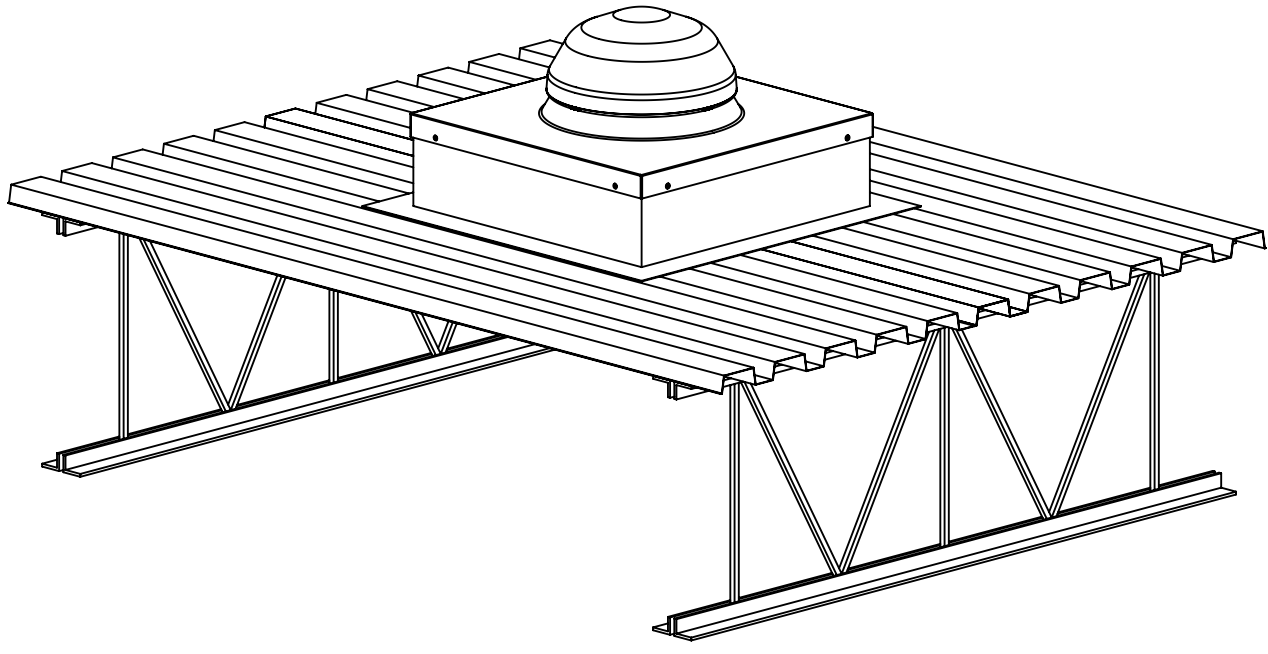
SECTION A-A



DETAIL B
SCALE 1 : 2

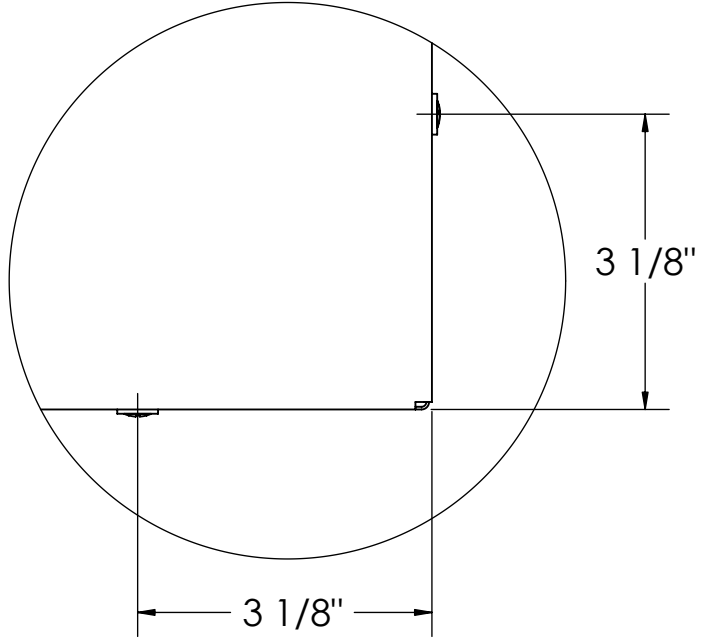
UNLESS OTHERWISE SPECIFIED: DIMENSIONS ARE IN INCHES TOLERANCES: ANGULAR: ±0.5° .X ± .1 .XX ± .02 .XXX ± .005		FRACTION ± 1/64		PROPRIETARY AND CONFIDENTIAL THE INFORMATION CONTAINED IN THIS DRAWING IS THE SOLE PROPERTY OF SOLATUBE. ANY REPRODUCTION IN PART OR AS A WHOLE WITHOUT THE WRITTEN PERMISSION OF SOLATUBE IS PROHIBITED.		 2210 OAK RIDGE WAY VISTA, CALIFORNIA 92081-8341 PH (760) 597-4400	
MATERIAL --	DRAWN BY STEVENS	DATE 4/22/08	TITLE: 290 DS COMMERCIAL ASSY.			SIZE C	REV 2
FINISH --	CHECKED BY --	DATE --	DWG. NO. 290-CURB-BDECK		SCALE: 1:10		SHEET 1 OF 1
DO NOT SCALE DRAWING		APPROVED BY --	DATE --				

REVISIONS				
ECO	REV.	DESCRIPTION	DATE	INC.
	1	INITIAL RELEASE	4/22/08	CS

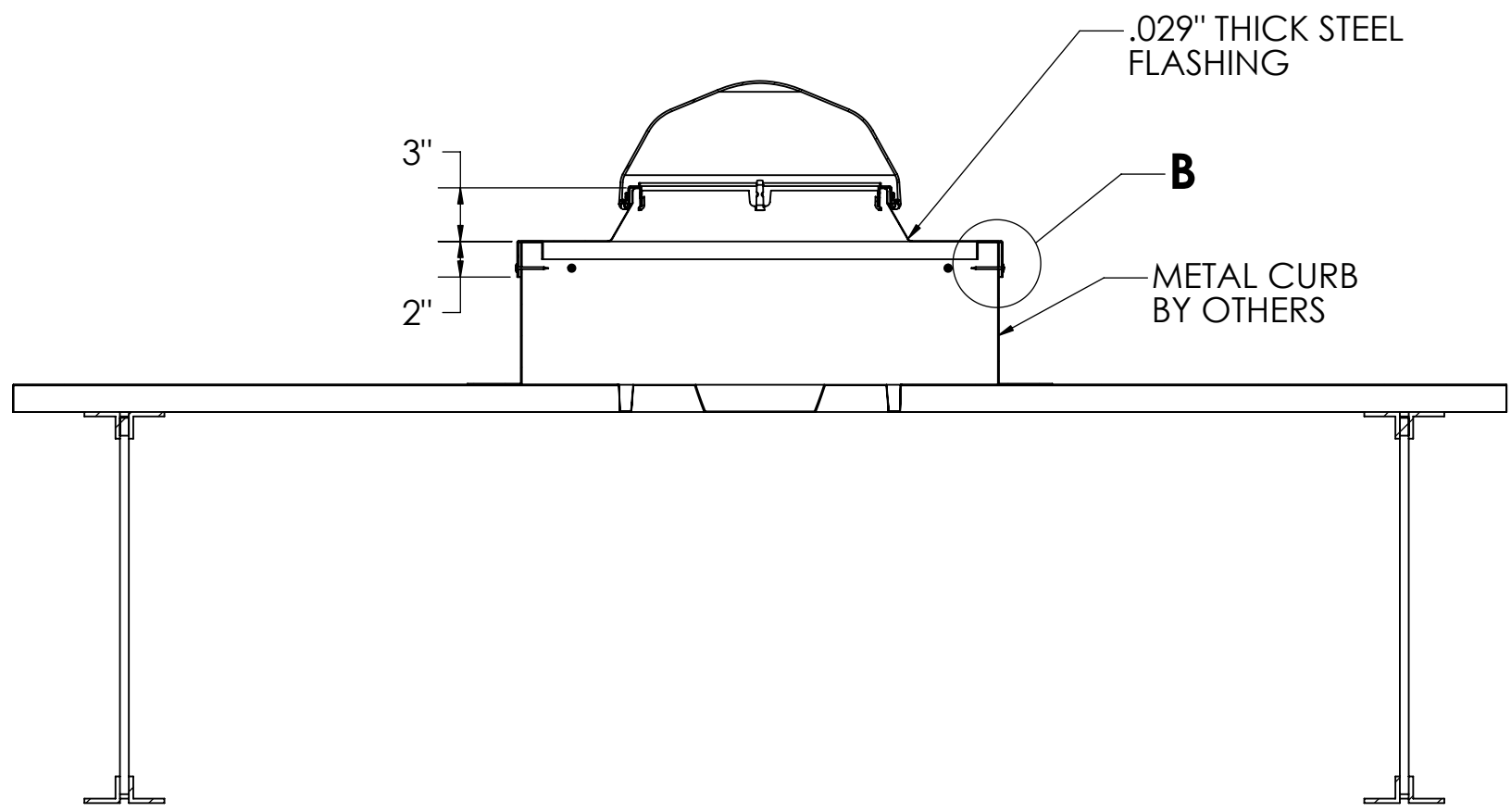


27 1/4"
SQUARE

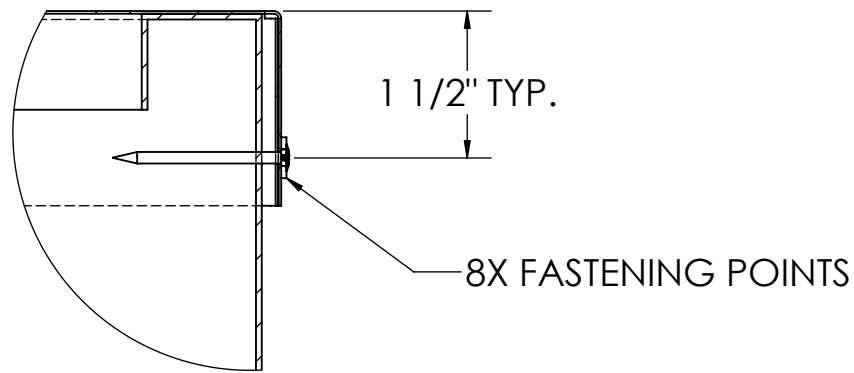
.029" THICK METAL
ROOF (B-DECK)
BY OTHERS




DETAIL C
SCALE 1 : 2
TYP.



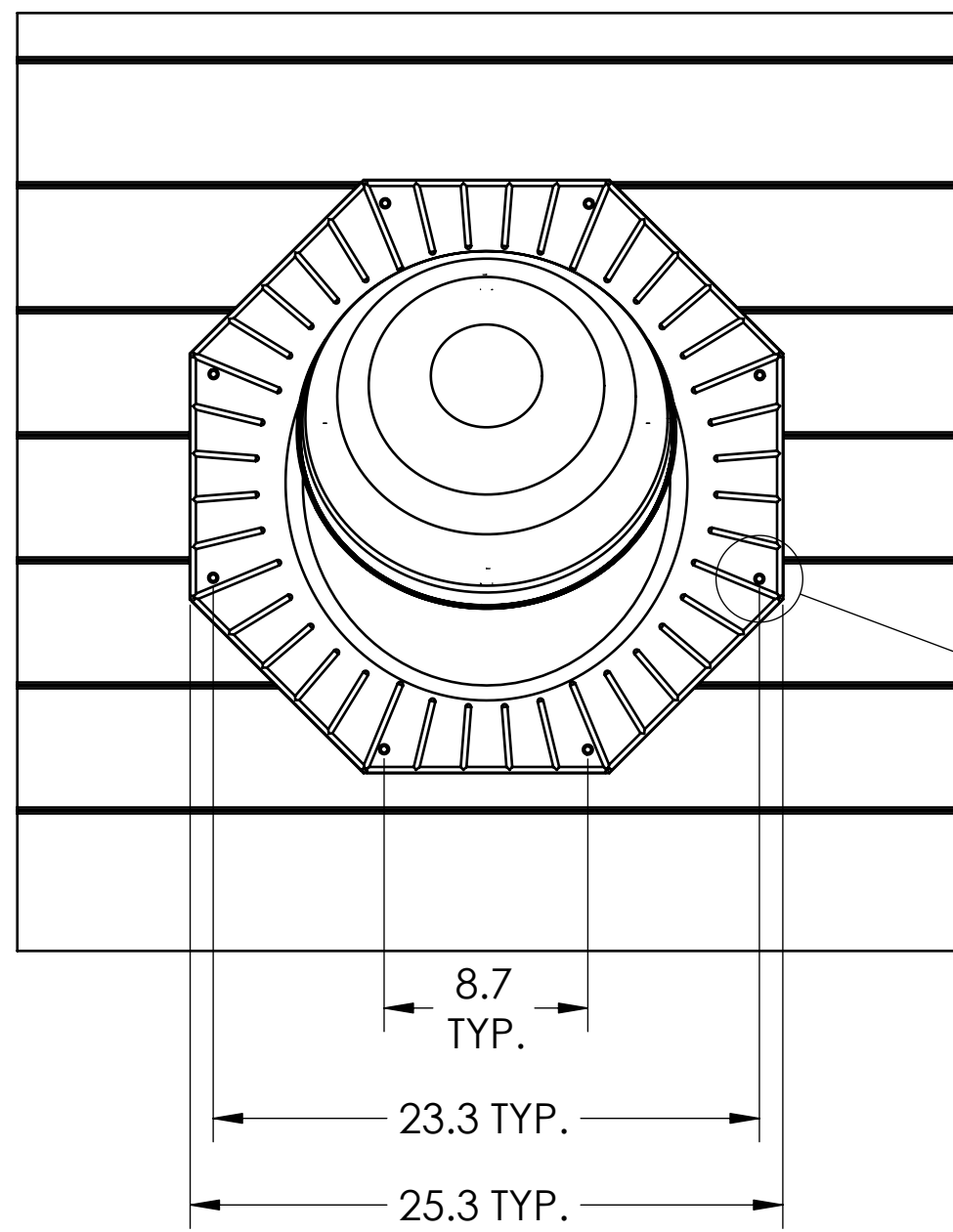
SECTION A-A



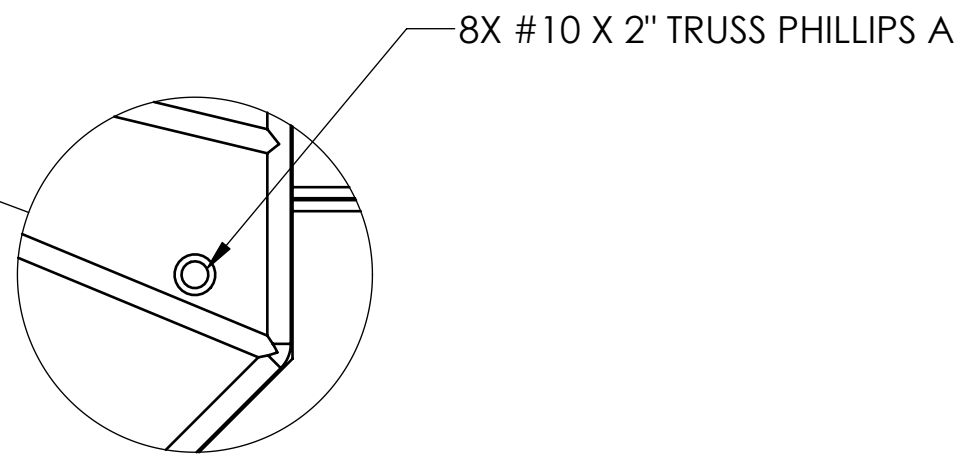
DETAIL B
SCALE 1 : 2

UNLESS OTHERWISE SPECIFIED: DIMENSIONS ARE IN INCHES TOLERANCES: ANGULAR: ±0.5° .X ± .1 .XX ± .02 .XXX ± .005		FRACTION ± 1/64		PROPRIETARY AND CONFIDENTIAL THE INFORMATION CONTAINED IN THIS DRAWING IS THE SOLE PROPERTY OF SOLATUBE. ANY REPRODUCTION IN PART OR AS A WHOLE WITHOUT THE WRITTEN PERMISSION OF SOLATUBE IS PROHIBITED.		 SOLATUBE <small>2210 OAK RIDGE WAY VISTA, CALIFORNIA 92081-8341 PH (760) 597-4400</small>	
MATERIAL --		DRAWN BY STEVENS		DATE 4/22/08		TITLE: 290 DS	
FINISH --		CHECKED BY --		DATE --		TYPE II & III ROOF ASSY.	
DO NOT SCALE DRAWING		APPROVED BY		DATE		C SIZE SCALE: 1:10	DWG. NO. 290-CURB-TYPE II-III
						REV 1	SHEET 1 OF 1

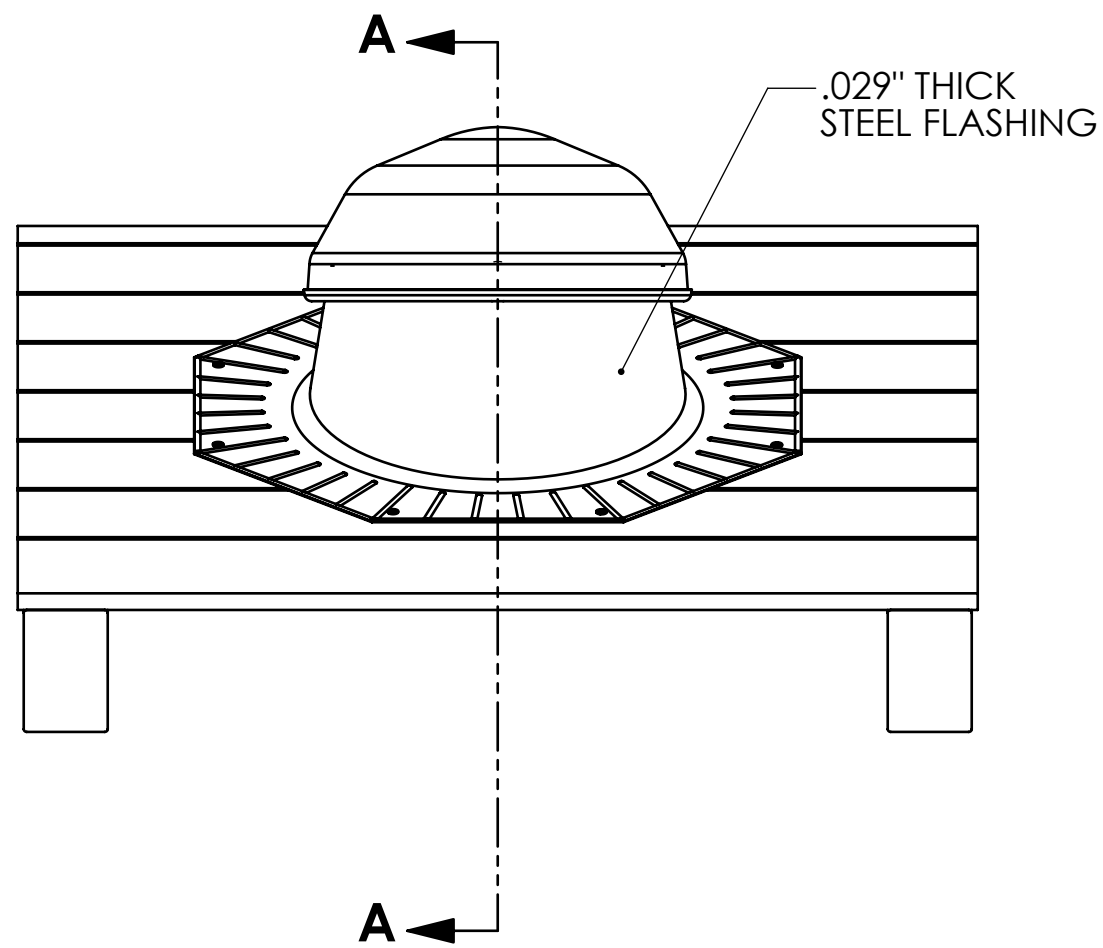
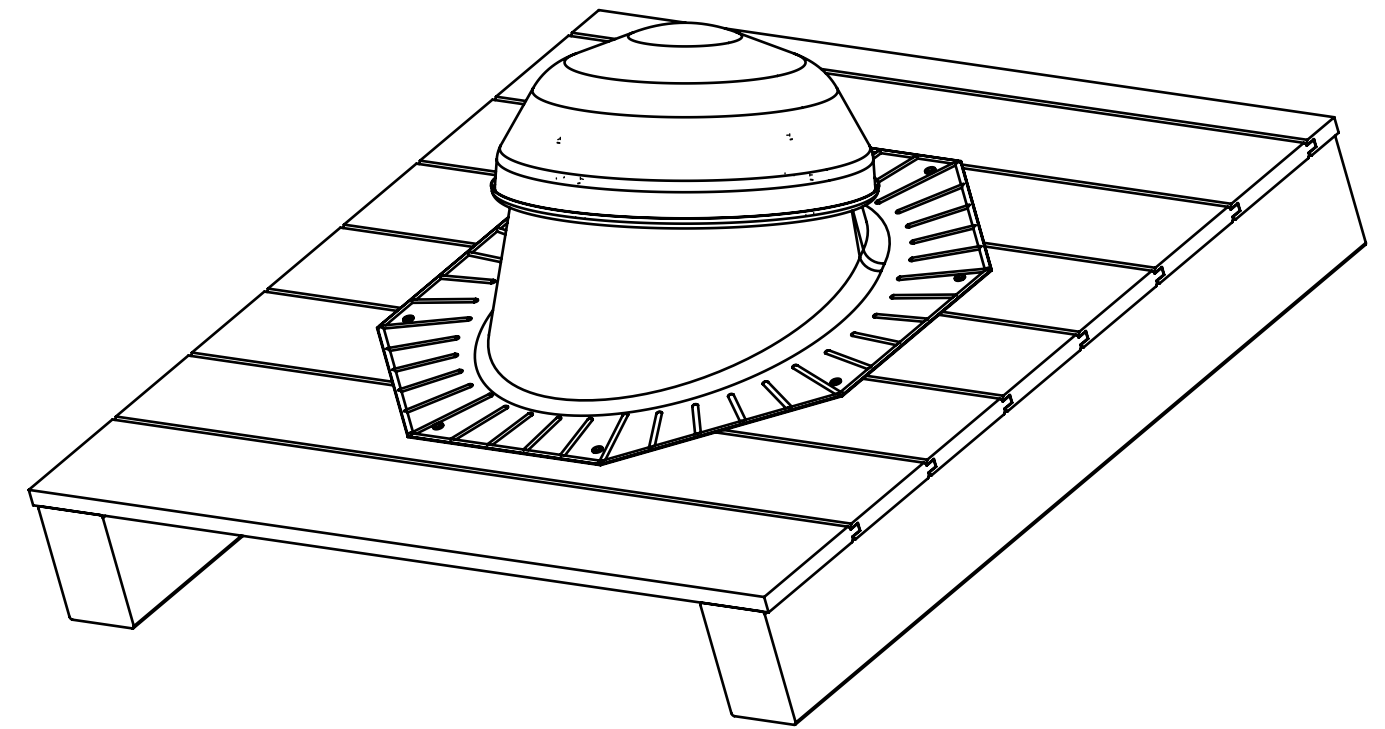
REVISIONS				
ECO	REV.	DESCRIPTION	DATE	INC.
	1	INITIAL RELEASE	4/30/2008	CS



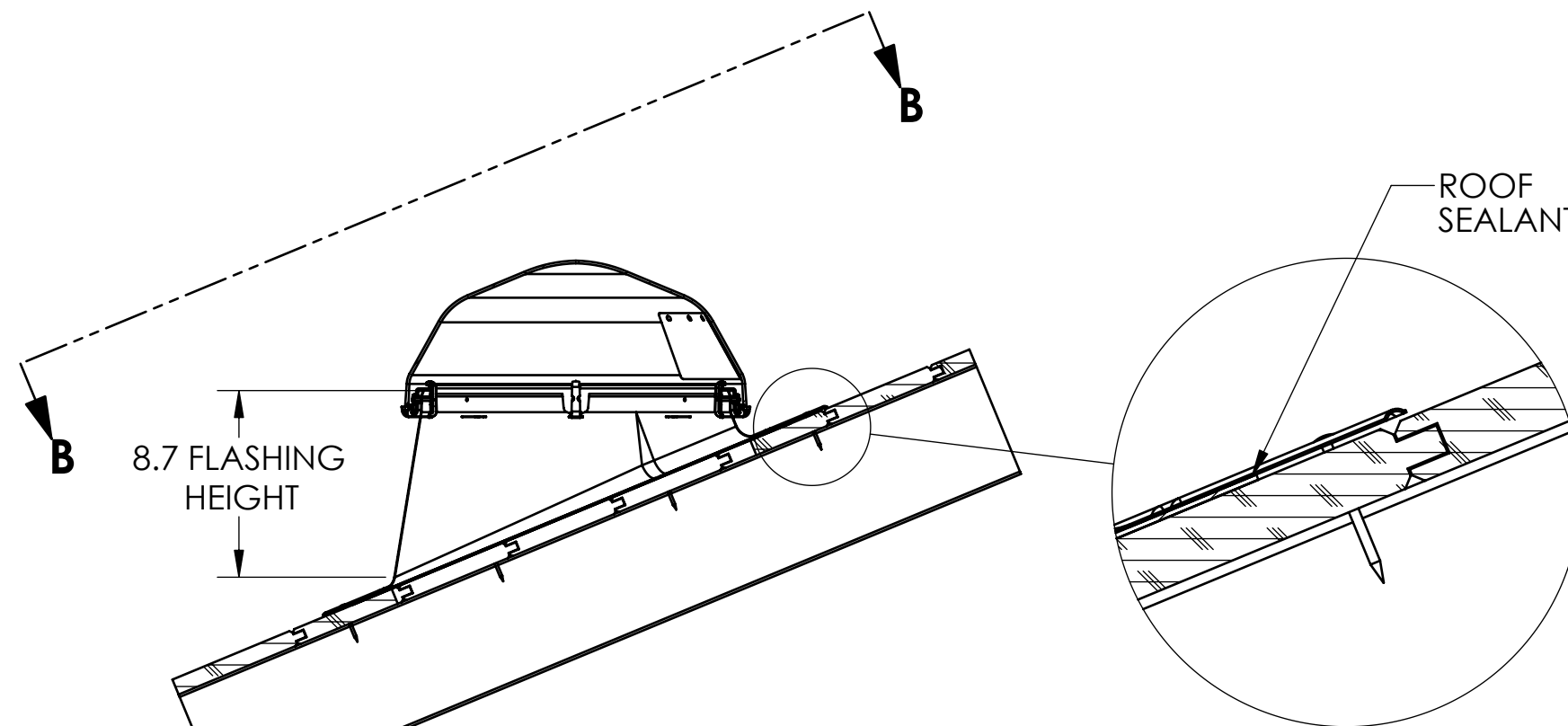
SECTION B-B



**DETAIL D
SCALE 1 : 2**



SECTION A-A



**DETAIL C
SCALE 1 : 2**

UNLESS OTHERWISE SPECIFIED:		PROPRIETARY AND CONFIDENTIAL		<p>2210 OAK RIDGE WAY VISTA, CALIFORNIA 92081-8341 PH (760) 597-4400</p>
TOLERANCES ANGULAR: ±0.5° INCH MILLIMETER .X ± .1 [.X] ± 2.5 .XX ± .01 [.XX] ± .25 .XXX ± .005 [XXX] ± .12		THE INFORMATION CONTAINED IN THIS DRAWING IS THE SOLE PROPERTY OF SOLATUBE. ANY REPRODUCTION IN PART OR AS A WHOLE WITHOUT THE WRITTEN PERMISSION OF SOLATUBE IS PROHIBITED.		
MATERIAL	--	DRAWN BY	DATE	290 DS TYPE IV (T & G) ROOF ASSY.
FINISH	--	CHECKED BY	DATE	
	--	APPROVED BY	DATE	
DO NOT SCALE DRAWING				TITLE: 290 DS TYPE IV (T & G) ROOF ASSY. SIZE: C DWG. NO. 290-PF-TYPE IV REV 1 SCALE: 1:8 SHEET 1 OF 1